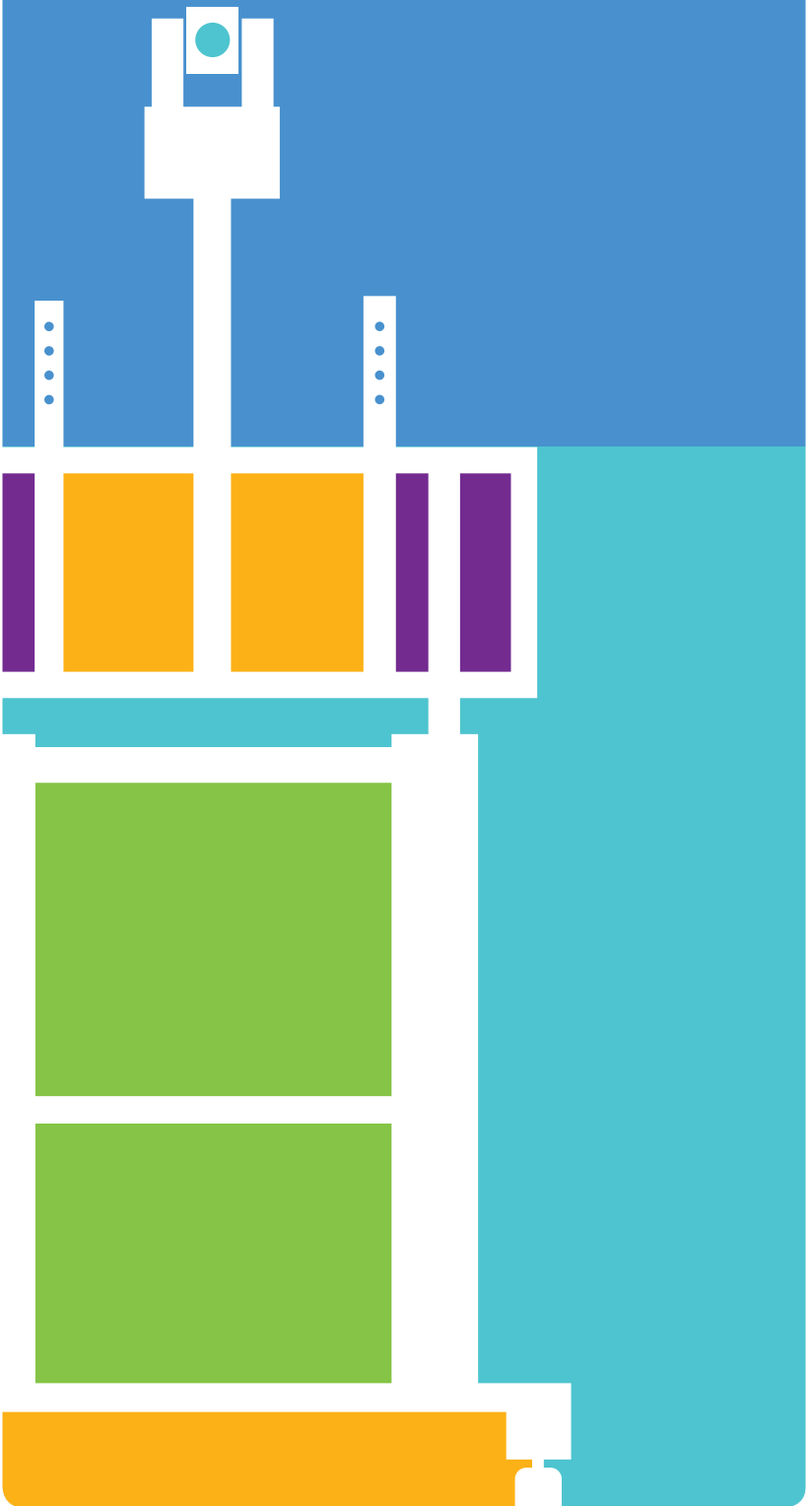


Furniture Systems for
Classrooms and
Videoconferencing
Applications



Standard Videoconferencing Cart

MODEL Edge S-3755

Built for standard height conference room tables, the Edge S-3755 allows for easy viewing of a flat screen monitor for meeting participants seated around a table. Combined with the optional adjustable camera mount, the camera is positioned at the proper height above the monitor to avoid severe down-angle produced by most of the taller flat screen carts available today.

FEATURES

- Fits 37" to 55" diagonal flat screen monitors
- Integrated cable management system built into legs
- 4" (101.6mm) twin wheels with 225 lbs. (102.3 kg) load rating each
- Two locking casters and two stabilizer feet

SPECIFICATIONS

- **DIMENSIONS** 49" (1.245m) H x 34.5" (876.3mm) W x 33.75" (857.25mm) D
- **WEIGHT** 64.9 lbs. (29.5 kg)
- **VESA Hole Pattern:** Up to 600mm X 400mm



PART NUMBERS

Assembled
799-1200-000
Flat-Packed
799-1200-001

STANDARD PACKAGE*

- Edge Standard Videoconferencing Cart S-3755
- Edge Equipment Enclosure with Shelf
- Camera Mounting Option

PART NUMBERS – PACKAGE

Assembled 799-1250-000
Flat-Packed 799-1250-001

All special configurations are offered upon request. Please contact us at Vaddio:

TOLL FREE 800-572-2011 PHONE 763-971-4400 FAX 763-971-4464

*For more details on package accessories please see pages 8 & 9

HighBoy Videoconferencing Cart

MODEL Edge HB-3755

Built for presentation environments where the monitor must be seen over a group of seated participants, the Edge HB-3755 stands at 63.25" (1.61m) plus the height of the monitor brackets. The Edge HB-3755 provides easy viewing and optimum camera or set-top codec height for larger classroom or corporate training environments.

FEATURES

- Fits 37" to 55" diagonal flat screen monitors
- Integrated cable management system built into legs
- 4" (101mm) twin wheels with 225 lbs. (102.3 kg) load rating each
- Two locking casters and two stabilizer feet

SPECIFICATIONS

- **DIMENSIONS** 63.25" (160.7cm) H x 34.5" (876.3mm) W x 33.75" (857.25mm) D
- **WEIGHT** 83.6 lbs. (38 kg)
- **VESA Hole Pattern:** Up to 600mm X 400mm



PART NUMBERS

Assembled
799-1000-000
Flat-Packed
799-1000-001

HIGHBOY PACKAGE*

- Edge HighBoy Videoconferencing Cart HB-3755
- Edge Equipment Enclosure with Shelf
- Camera Mounting Option

PART NUMBERS – PACKAGE

Assembled 799-1050-000
Flat-Packed 799-1050-001

All special configurations are offered upon request. Please contact us at Vaddio:

TOLL FREE 800-572-2011 PHONE 763-971-4400 FAX 763-971-4464

*For more details on package accessories please see pages 8 & 9

Jumbo Videoconferencing Cart

MODEL Edge J-5565

The Edge J-5565 provides an ideal mounting solution for large format or digital signage monitors from 55" to 65" diagonal. Built with a tall frame for optimized viewing heights, the wide base offers stability, strength and portability for larger conferencing environments.

FEATURES

- Fits 55" to 65" diagonal flat screen monitors
- Tall leg system built for larger conferencing environments
- Integrated cable management system built into legs
- 4" (101mm) twin wheels with 225 lbs. (102.3 kg) load rating each
- Two locking casters and two stabilizer feet

SPECIFICATIONS

- **DIMENSIONS** 61.25" (1.56m) H x 39.6" (1.005m) W x 33.75" (857.25mm) D
- **WEIGHT** 89.1 lbs. (40.5 kg)
- **VESA Hole Pattern:** Up to 800mm X 600mm



PART NUMBERS

Assembled
799-1100-000
Flat-Packed
799-1100-001

JUMBO PACKAGE*

- Edge Jumbo Videoconferencing Cart J-5565
- Edge EE-6RU 6-Space Equipment Enclosure
- Camera Mounting Option

PART NUMBERS – PACKAGE

Assembled 799-1150-000
Flat-Packed 799-1150-001

All special configurations are offered upon request. Please contact us at Vaddio:

TOLL FREE 800-572-2011 **PHONE** 763-971-4400 **FAX** 763-971-4464

Double Wide Videoconferencing Cart

MODEL Edge DW-3747

The Edge DW-3747 is designed to support two flat screen monitors from 37" to 47" side-by-side on a single Edge monitor stand base. The wide base and tall frame provide stability; while four monitor brackets secure the mounting of two flat screen monitors.

FEATURES

- Fits two 37" to 47" diagonal flat screen monitors
- Four monitor brackets tilt 12° forward and 5° back
- Integrated cable management system built into legs
- 4" (101mm) twin wheels with 225 lbs. (102.3 kg) load rating each
- Two locking casters and two stabilizer feet

SPECIFICATIONS

- **DIMENSIONS** 61.25" (1.56m) H x 39.6" (1.005m) W x 33.75" (857.25mm) D
- **WEIGHT** 100 lbs. (45.45 kg)
- **Dual monitor crossbar length:** 79.75" (2.03m)
- **VESA Hole Pattern:** Supports two monitors up to 400mm X 400mm each



PART NUMBERS

Assembled
799-1120-000
Flat-Packed
799-1120-001

DOUBLE WIDE PACKAGE*

- Edge Double Wide Videoconferencing Cart DW-3747
- Edge EE-9RU 9-Space Equipment Enclosure
- Camera Mounting Option

PART NUMBERS – PACKAGE

Assembled 799-1170-000
Flat-Packed 799-1170-001

All special configurations are offered upon request. Please contact us at Vaddio:

TOLL FREE 800-572-2011 **PHONE** 763-971-4400 **FAX** 763-971-4464

Super Double Wide Videoconferencing Cart

MODEL Edge SDW-4655

The Edge SDW-4655 supports two large format monitors from 46" to 55", side-by-side on a single Edge monitor stand base. The wide base and tall frame provide stability and optimized viewing; while four monitor brackets secure the mounting of two flat screen monitors.

FEATURES

- Fits two 46" to 55" diagonal flat screen monitors
- Four monitor brackets tilt 12° forward and 5° back
- Integrated cable management system built into legs
- 4" (101mm) twin wheels with 225 lbs. (102.3 kg) load rating each
- Two locking casters and two stabilizer feet

SPECIFICATIONS

- **DIMENSIONS** 61.25" (1.56m) H x 39.6" (1.005m) W x 33.75" (857.25mm) D
- **WEIGHT** 109 lbs. (45.45 kg)
- Dual monitor crossbar length: 87.75" (2.23m)
- VESA Hole Pattern: Supports two monitors up to 600mm X 400mm each



PART NUMBERS

Assembled
799-1130-000
Flat-Packed
799-1130-001

SUPER DOUBLE WIDE PACKAGE*

- Edge Super Double Wide Videoconferencing Cart SDW-4655
- Edge EE-9RU 9-Space Equipment Enclosure
- Camera Mounting Option

PART NUMBERS – PACKAGE

Assembled 799-1180-000
Flat-Packed 799-1180-001

All special configurations are offered upon request. Please contact us at Vaddio:

TOLL FREE 800-572-2011 PHONE 763-971-4400 FAX 763-971-4464

AutoTrak Cart System

MODEL Edge ASC-3755

Built exclusively for Vaddio's AutoTrak automated camera tracking system, the Edge ASC-3755 system places both the reference and tracking camera at the correct height for the recommended 30' (9.144m) to 40' (12.19m) distance between the system and the presenter. The Edge ASC-3755 stands at 63.25" (160.7 cm), plus the height of the monitor brackets, and fits 37" to 55" diagonal flat screen monitors.

FEATURES

- Fits 37" to 55" diagonal flat screen monitors
- Integrated cable management system built into legs
- 4" (101mm) twin wheels with 225 lbs. (102.3 kg) load rating each
- Two locking casters and two stabilizer feet

SPECIFICATIONS

- **DIMENSIONS** 63.25" (160.7cm) H x 34.5" (876.3mm) W x 33.75" (857.25mm) D
- **WEIGHT** 83.6 lbs. (38 kg)
- VESA Hole Pattern:
Up to 600mm X 400mm



PART NUMBERS

Assembled
799-1000-000
Flat-Packed
799-1000-001

AUTOTRAK PACKAGE*

- Edge Model ASC-3755 AutoTrak System Cart
- Edge EE-9RU 9-Space Equipment Enclosure
- Heavy-duty Gusseted Dual Camera Mount
- Adjustable Vertical Support Pipe

PART NUMBERS – PACKAGE

Assembled 799-7200-000
Flat-Packed 799-7200-001

All special configurations are offered upon request. Please contact us at Vaddio:

TOLL FREE 800-572-2011 PHONE 763-971-4400 FAX 763-971-4464

Cabinet Options

Equipment Enclosure with Shelf MODEL EE-Shelf

The Edge Equipment Enclosure with Shelf mounts to any of the Edge Videoconferencing Carts and includes one internal shelf with cable management, a vented rear panel for cooling/wiring access and smoked acrylic doors to allow IR signals to pass.

DIMENSIONS Internal 11" (279.4mm) H x 20.625" (523.8mm) W x 14" (355.6mm) D



PART NUMBERS
Assembled 798-0500-000
Flat-Packed 798-0500-001

6RU Equipment Enclosure MODEL EE-6RU

The Edge 6-RU Equipment Enclosure mounts to any of the Edge Videoconferencing Carts and includes black anodized rack rails to fit six spaces of rack mount equipment. The rear panel is vented for cooling/wiring access and smoked acrylic doors allow IR signals to pass.

DIMENSIONS Internal 10.5" (266.7mm) H x 19.125" (485.8mm) W x 13.5" (342.9mm) D (to the rails)



PART NUMBERS
Assembled 798-0600-000
Flat-Packed 798-0600-001

9RU Equipment Enclosure MODEL EE-9RU

The Edge 9-RU Equipment Enclosure mounts to any of the Edge Videoconferencing Carts and includes black anodized rack rails to fit nine spaces of rack mount equipment. The rear panel is vented for cooling/wiring access and smoked acrylic doors allow IR signals to pass.

DIMENSIONS Internal 15.75" (400.05mm) H x 19.125" (485.8mm) W x 13.5" (342.9mm) D (to the rails)



PART NUMBERS
Assembled 798-0900-000
Flat-Packed 798-0900-001

Rolling Cart MODEL RC-18RU

The Edge Rolling Cart is a portable rolling rack enclosure with 4" (101.6 mm) twin wheel casters and black anodized rack rails to fit 18 spaces of rack equipment. The rear panel is vented for cooling/wiring access.

DIMENSIONS Internal 31.5" (800.1mm) H x 19.125" (485.8mm) W x 17.25" (438.15mm) D (to the rails) Total Height 37.5" (952.5mm)



PART NUMBERS
Assembled 799-0180-000
Flat-Packed 799-0180-001

Short Rolling Cart MODEL RC-12RU

The Edge Short Rolling Cart is a 12-RU portable rolling rack enclosure designed for use underneath a desk or table. The black anodized rack rails fit 12 spaces of rack equipment and the 4" (101.6 mm) twin wheel casters allow for smooth mobility. The rear panel is vented for cooling/wiring access.

DIMENSIONS Internal 21" (53.3 cm) H x 19.125" (485.8mm) W x 17.25" (438.15mm) D (to the rails) Total Height 28" (711.2mm)



PART NUMBERS
Assembled 799-0120-000
Flat-Packed 799-0120-001

Edge Cart Options

Videoconferencing Cart Optional Caster Upgrade Kit

- Two 5" swivel casters and two 5" locking casters
- Nylon-based rubber caster wheels
- Smooth and quiet on hard surfaces
- Load capacity increased to 325 lbs. per caster



PART NUMBER
798-0100-022

ECM-VAD Camera Mounting System MODEL ECM-VAD

The Edge ECM-VAD Camera Mounting System provides a platform for the Vaddio ClearVIEW HD-20, HD-19 and HD-18 PTZ cameras, as well as other popular PTZ cameras on the market today.

DIMENSIONS
6.75" (171.5mm) W x 11.5" (292.1mm) D

PART NUMBER
798-0100-100



ECM-PTL Camera Mounting System MODEL ECM-PTL

The Edge ECM-PTL Camera Mounting System provides a platform for the Polycom EagleEye, the TANDBERG Precision HD cameras (1080p and 720p) and the LifeSize PTZ cameras, as well as other popular PTZ cameras on the market today.

DIMENSIONS
10.875" (27623mm) W x 9" (228.6mm) D

PART NUMBER
798-0100-101



ECM-ST5 Camera Mounting System MODEL ECM-ST5

The Edge ECM-ST5 Camera Mounting System provides a larger platform to accommodate most set top codecs and wider-based PTZ cameras.

DIMENSIONS
15.75" (400.05mm) W x 8.75" (222.25mm) D

PART NUMBER
798-0100-102



Instrukt Lectern

Instrukt LC-3630 with Casters



Instrukt LL-3630 with Legs



The Instrukt Lectern brings exceptional design, elegance and value to any everyday teaching or conferencing environment. This versatile lectern is available with casters for portable installations or with legs for more permanent positioning. The reading shelf, large work surface and optional Altinex Interconnect Box make this distinct lectern ideal for any distance-learning environment.

FEATURES

- Contemporary design with unique complimentary color scheme
- Wire management system with adjustable internal shelf
- Reading shelf integrated into the top of the work surface with paper stop
- Open shelf below work surface for storage of presentation materials
- European concealed hinges and recessed door pulls for clean and modern look
- 4" (101 mm) twin wheel casters with 225 lbs. (102.3 kg) load rating each [LC models]
- Steel reinforced caster mounting brackets for strength and portability
- **DIMENSIONS** 36" (914mm) H x 30" (762mm) W x 25.25" (641mm) D

OPTIONAL ALTINEX TNP121C:

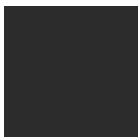
Optional Altinex TNP121C Tilt 'n Plug Jr. Tabletop Interconnect Box with Power receptacle, HD-15F connector, 3.5mm audio connector, network and phone jacks.



PART NUMBER
798-2500-121

COLORS Available in three laminate finishes

STD GRAY/BLACK



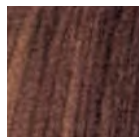
LC-3630 (CASTERS)
Assembled
799-2000-000
Flat-Packed
799-2000-001

OILED CHERRY



LC-3630 (CASTERS)
Assembled
799-2000-000C
Flat-Packed
799-2000-001C

KONA BLEND



LC-3630 (CASTERS)
Assembled
799-2000-000K
Flat-Packed
799-2000-001K

LL-3630 (LEGS)

Assembled
799-2050-000
Flat-Packed
799-2050-001

LL-3630 (LEGS)

Assembled
799-2050-000C
Flat-Packed
799-2050-001C

LL-3630 (LEGS)

Assembled
799-2050-000K
Flat-Packed
799-2050-001K

Instrukt Teaching Station

Instrukt TSL-4830 with Legs



Instrukt TSC-4830 with Casters



The Instrukt Teaching Station brings exceptional design, style and quality to any everyday teaching or distance-learning environment. Designed with a 48" (1.22m) x 25.25" (641mm) work surface and reading shelf, it can accommodate almost any size presentation materials. This versatile Teaching Station is available with casters for portable installations or with legs for more permanent positioning.

FEATURES

- Contemporary design with unique complimentary color scheme
- Wire management system with adjustable internal shelf
- Reading shelf integrated into the top of the work surface with paper stop
- Three bays of storage for installation of AV equipment or presentation tools
- European concealed hinges and recessed door pulls for clean and modern look
- 4" (101 mm) twin wheel casters with 225 lbs. (102.3 kg) load rating each [LC models]
- Steel reinforced caster mounting brackets for strength and portability
- **DIMENSIONS** 36" (914mm) H x 48" (1.22m) W x 25.25" (641mm) D

OPTIONAL ALTINEX TNP121C:

Optional Altinex TNP121C Tilt 'n Plug Jr. Tabletop Interconnect Box with Power receptacle, HD-15F connector, 3.5mm audio connector, network and phone jacks.



PART NUMBER
798-2500-121

COLORS Available in three laminate finishes

STD GRAY/BLACK



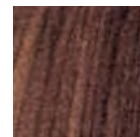
TSC-4830 (CASTERS)
Assembled
799-3050-000
Flat-Packed
799-3050-001

OILED CHERRY



TSC-4830 (CASTERS)
Assembled
799-3000-000C
Flat-Packed
799-3000-001C

KONA BLEND



TSC-4830 (CASTERS)
Assembled
799-3000-000K
Flat-Packed
799-3000-001K

TSL-4830 (LEGS)

Assembled
799-3000-000
Flat-Packed
799-3000-001

TSL-4830 (LEGS)

Assembled
799-3050-000C
Flat-Packed
799-3050-001C

TSL-4830 (LEGS)

Assembled
799-3050-000K
Flat-Packed
799-3050-001K

Video Production Workstation

MODEL Model: SC-8646

Vaddio's Video Production Workstation offers exceptional ergonomics, quality construction and a design that can be customized to any studio environment. Adjustable tower heights and placement enable full view beyond the console. Customizable storage and rack spaces, integrated cable management and proper ventilation make this console ideal for any growing production space.

FEATURES

- Offering 30+ rack spaces
- Two lateral cable management channels
- Strong base, rigid design and steel feet provide ultimate stability
- Back panels easily remove for rear access to equipment
- Ample workspace for laptop or other presentation materials

DIMENSIONS

85.5" (217.2 cm) W x 29" (736.6 mm) H x 45.75" (116.2 cm) D



Video Production Workstation Packages*

The Video Production Workstation comes standard with two base cabinets and console top. A variety of tower options are available for optimum versatility.

PACKAGE 1

- 2 Mid Towers
- 1 Low Tower

PACKAGE 2

- 2 High Towers
- 1 Low Tower

PACKAGE 3

- 2 High Towers
- 1 Mid Tower

PART NUMBER

Assembled 799-4010-000
Flat-Packed 799-4010-001

PART NUMBER

Assembled 799-4020-000
Flat-Packed 799-4020-001

PART NUMBER

Assembled 799-4030-000
Flat-Packed 799-4030-001

Video Production Workstation Tower Options



LOW TOWER

- 13 Rack Unit Spaces
- 4.75" (120.7 mm) H x 19.125" (485.78 mm) W x 24.75" (628.65 mm) D



MID TOWER

- 12 Rack Unit Spaces
- 14" (355.6 mm) H x 19.125" (485.78 mm) W x 20.375" (517.53 mm) D



HIGH TOWER

- 10 Rack Unit Spaces
- 16.875" (428.63 mm) H x 19.125" (485.78 mm) W x 19.125" (485.78 mm) D

Base Cabinet Add On Options

RACK RAILS

798-0410-000

DOORS

798-0420-000

LOCKS

798-0430-000

*All special configurations are offered upon request. Please contact us at Vaddio:

TOLL FREE 800-572-2011 PHONE 763-971-4400 FAX 763-971-4464

Production Console

MODEL PC-5434

Vaddio's Production Console brings exceptional design, build and versatility to smaller, more compact studio workspaces. All Vaddio ProductionVIEW units fit directly into a flush cutout in the console top, resulting in a clean, seamless and organized work area. Also included is a 10-RU tower providing extra space for additional equipment needs.

FEATURES

- Compact design for smaller studio spaces
- All Vaddio ProductionVIEW units fit flush with console top (8 rack spaces)
- Low profile for optimized viewing angle
- One 10-RU Tower
- Cable management bay
- Metal base with adjustable gliders for stability and portability

DIMENSIONS

- Console 54" (137.16 cm) W x 29" (736.6 mm) H x 34" (863.6 mm) D
- Tower 20.5" (520.7 mm) W x 14" (355.6 mm) H x 18.75" (476.25 mm) D



PART NUMBER

Assembled 799-4100-000
Flat-Packed 799-4100-001

*All special configurations are offered upon request. Please contact us at Vaddio:

TOLL FREE 800-572-2011 PHONE 763-971-4400 FAX 763-971-4464

ProductionVIEW Rack Console

The ProductionVIEW Rack Console is a dual-bay, slant-top rack mounting system with an 8-RU upper bay and a 7-RU lower bay. The lower rack bay fits the ProductionVIEW line of consoles, while the upper rack bay fits a variety of rack mount equipment up to 14 inches deep.

FEATURES

- 8-RU Upper bay
- 7-RU Lower bay
- Heavy-duty aluminum construction
- Attractive black powder coat finish



PART NUMBER
998-5000-100

Precision Camera Controller Rack Drawer

The Precision Camera Controller Rack Enclosure Drawer includes a sliding shelf and controller mounting bracket kit for a ProductionVIEW Precision Camera Controller to be easily stored. This accessory can also be used with other third-party rack systems.

FEATURES

- Locking slide-out drawer
- Mounting hardware for Precision Camera Controller
- * Precision Camera Controller not included



PART NUMBER
998-5000-211

Precision Camera Controller Rack Mount Ears

4-RU Rack Mount Ears attach to the sides of the ProductionVIEW Precision Camera Controller for mounting into system racks of ProductionVIEW Rack Consoles.

PART NUMBER
998-5000-002



ProductionVIEW Rack Enclosure

The ProductionVIEW Rack Enclosure is a dual-bay rack mounting system with an 8-RU upper bay and a 5-RU lower bay. The lower rack bay fits large HD switchers/mixers, including the ProductionVIEW console suite of products, while the upper rack bay fits a variety of rack mount equipment up to 18 inches deep. Made of heavy gauge aluminum, the back panel has wire tie slots, and holes for mounting the enclosure to a tabletop. The black powder coat finish is durable and long lasting.

FEATURES

- 8-RU Upper bay
- 5-RU Lower bay
- Heavy-duty aluminum construction
- Attractive black powder coat finish
- Holes for mounting multiple enclosures to each other
- **Drawer not included



PART NUMBER
998-5000-200

ProductionVIEW Rack Enclosure Drawer

The ProductionVIEW Rack Enclosure Drawer includes a sliding shelf and controller mounting bracket kit for ProductionVIEW FX, HD, HD-SDI, HD MV, or HD-SDI MV consoles to be easily stored. This accessory can also be used with other third-party rack systems.

FEATURES

- Locking slide-out drawer
- Mounting hardware for ProductionVIEW series switchers/controllers
- * ProductionVIEW HD not included



PART NUMBER
998-5000-210

ProductionVIEW Rack Mount Ears

6-RU Rack Mount Ears attach to the sides of any ProductionVIEW (not including Precision Camera Controller) for mounting into system racks or ProductionVIEW Rack Consoles.

PART NUMBER
998-5000-001



© 2011 All Rights Reserved. Reproduction in whole or in part without written permission is prohibited. Specifications and pricing subject to change. Vaddio, Edge Videoconferencing Cart, Instruk Lectern, Instruk Teaching Station, AutoTrak, ClearVIEW HD-18, ClearVIEW HD-19, ClearVIEW HD-20, ProductionVIEW are registered trademarks of Vaddio.

Learn more about our furniture systems, cameras and camera control equipment at 800-572-2011 or vaddio.com

Vaddio
9433 Science Center Drive
Minneapolis MN 55428

vaddio 
REDEFINING CAMERA CONTROL