

# RoboSHOT 12 and 30 HD-SDI Cameras

---

## Current Release

### RoboSHOT® 12/30 HD-SDI 3.1.0

May 13, 2019

#### Improvements

- In the admin web interface, various camera behavior settings have moved from soft DIP switches to the General tab of the System page.
- Some parameters were incorrectly stored in CCU scenes and in presets stored with color information. This has been fixed.
- Executing several pan, tilt, or zoom to absolute position commands in quick succession could generate error messages. This has been fixed.

## Release History

### RoboSHOT 12/30 HD-SDI 3.0.0

March 15, 2019

#### New Features

- Added support for RTMP streaming. This is configured in the admin web interface and can be enabled/disabled in both the admin and the user web interface.

#### Improvements

- Improved handling of HDMI hot-plug events.
- Improved camera behavior during lengthy camera operations.
- In some cases, the web interface did not load properly if the computer had recently accessed another Vaddio device at the same IP address. This has been fixed.
- Improved support for Internet Explorer. Progress/status icons associated with data import and firmware update messages now display as for other browsers.

### RoboSHOT 12/30 HD-SDI 2.4.0

November 16, 2018

#### Improvements

- Added one-push white balance function to the web UI.
- Added Telnet command to allow streaming enabled status to be toggled.

### RoboSHOT 12/30 HD-SDI 2.3.0

August 30, 2018

#### New Features

- Added CODEC compatibility mode for Polycom® 3xx/5xx/7xx series Codecs.
- Added CODEC compatibility mode for Cisco® SX-20 and SX-80 series CODECs. (For SX-20 CODECs, Vaddio recommends CODEC's firmware be updated to latest "CE" series firmware for best operation)
- Advanced streaming settings for enhanced compatibility with VPN environments.
- HTTPS access to the camera is now supported and the HTTPS certificate can now be configured from the admin web interface.
- HTTP access to the camera can now be disabled by an admin. When this is disabled, HTTPS must be used to connect to the web interface.
- Added support for DNS Service Discovery.

- Telnet commands for pan and tilt now support absolute position control:  
`camera pan set <-156.3..151.7>`  
`camera tilt set <-30.0..92.5>`  
Note that if the camera is inverted and Image Flip is selected, the tilt range is inverted as well: -92.5 to 30. A negative value always represents a downward tilt.
- Telnet command to set or get camera module gamma values:  
`camera ccu set gamma <value>`  
`camera ccu get gamma`
- Telnet command to control the front LED: `camera led set off | on | get`
- Added public REST API.
- Serial command to retrieve the camera's IP address: [81 09 08 4E 00 00 FF].

#### Improvements

- Configuration settings can now be imported from previous versions of software.
- When the camera is in standby mode, the web interface no longer permits configuration changes using the soft DIP switches.
- The front LED can now be turned off during standby, or disabled entirely.
- Discontinued support for DES and 3DES cyphers and TLS v1.0 protocol. More recent cyphers and protocols continue to be supported.
- Enhanced support for USB joystick control.
- Improved firewall settings.
- Updated syntax for "network ping count" Telnet command.
- Updated system time zone data.
- Fix for incorrect behavior when switching LED color scheme during video mute.
- Improved browser compatibility with Internet Explorer® 9 through IE11.
- IP streaming improvements.
- Web interface improvements.

### **RoboSHOT 12/30 HD-SDI 2.2.0**

September 1, 2017

#### Improvements

- Improved color handling for a more natural appearance.
- Added support for wide dynamic range mode.
- Restoring factory defaults now resets the admin password.
- Custom home position is now stored correctly whether its is stored with the associated CCU information or not.
- If a custom home position is set, the camera always moves to that position when coming out of standby.
- Preset and CCU scene labels can now be edited only when logged in as admin.
- Custom CCU scenes can now be cleared from the web interface.
- CCU sliders now show the correct values when the camera is in standby.
- Corrected an issue that could cause the camera to "get stuck" when attempting to enter or exit standby.
- DHCP hostname changes are now handled properly.
- Various improvements to the web interface.

### **RoboSHOT 12/30 HD-SDI 2.1.2**

November 8, 2016

#### Improvements

- Internal code improvements.

### **RoboSHOT 12/30 HD-SDI 2.1.1**

September 28, 2016

#### New Features

- Constant bit rate (CBR) streaming option is now available in the web interface.
- The RoboSHOT HD-SDI cameras now support both Level A and Level B SDI; this is configurable in the web interface. Level A is the default.

- The RoboSHOT HD-SDI cameras have been updated to work with RoboTRAK.

#### Improvements

- Changed default streaming settings to optimize streaming performance under most conditions.
- Cameras now reach the full 90° upward tilt stated in the technical specifications.
- Turning the video output resolution switch, pausing momentarily, and turning it again no longer causes errors.
- When the camera starts the standby sequence, it now stops processing commands to prevent standing by in an unexpected position.
- Custom home presets are retained properly through firmware updates.
- The `ccu scene store` command now works as documented.
- Fix for rarely observed situation where using the camera's web interface to enable its IP stream caused an associated PCC Premier to lose the stream for its local video output.
- The `streaming settings get` command no longer returns error messages indicating "stream/1 list id not found."

#### **RoboSHOT 12/30 2.0.2**

June 27, 2016

#### Improvements

- Addresses a video issue related to a recent hardware change.

#### **RoboSHOT 12/30 HD-SDI 2.0.1**

May 19, 2016

#### Improvements

- Improvements in saving changes to IP streaming settings.
- Improved performance with AV Bridge MATRIX PRO.

#### **RoboSHOT 12/30 HD-SDI 2.0.0**

January 15, 2016

#### New Features

- Added ability to import/export configurations for camera settings. This feature will only work when importing to the same firmware version as the exported file.
- Added two Telnet commands for focus mode and standby state inquiry:
  - `camera focus mode get`
  - `camera standby get`

#### Improvements

- Added real-time IP-based control for the PCC Premier.
- Visual indication on Web UI of unsaved parameter which requires saving.
- Removed default start-up location preset and CCU scene, replacing with the ability to set a custom home position. This custom home preset can be set like any other preset..

#### **RoboSHOT 12/30 HD-SDI 1.0.1**

September 30, 2015

#### Notes

- Initial release.

## Firmware Update Instructions – RoboSHOT 12 & 30 HD-SDI

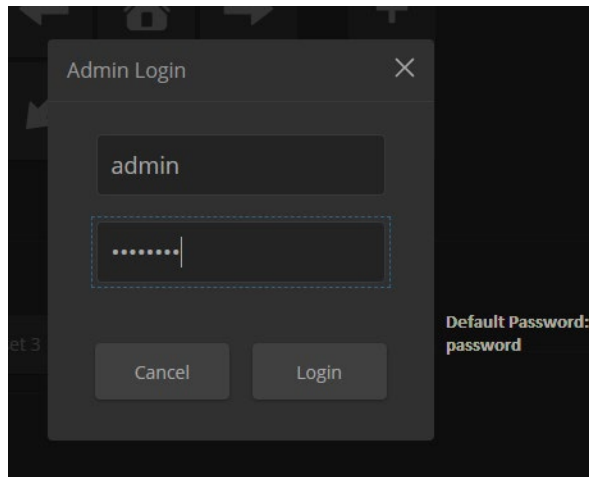
### Requirements

- Network access to the camera.
- The web interface's admin password, if it has been changed from factory default.
- The .p7m firmware file for the camera (found on the RoboSHOT HD-SDI product page's firmware tab), downloaded and saved to your local drive.

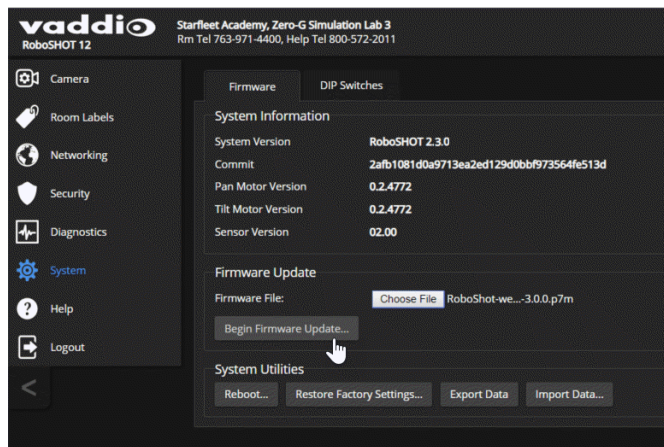
### Step-By-Step Process

*Note: Your camera's web interface will display different model and firmware information from the screen shots in this document. The process for updating firmware is the same for all cameras in the RoboSHOT family.*

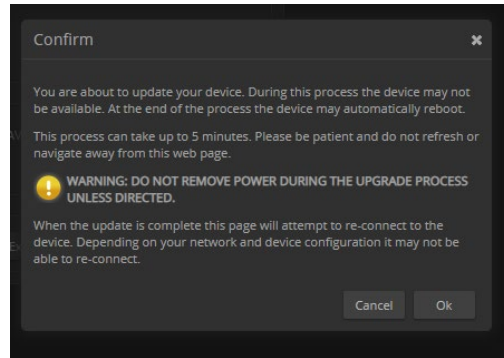
1. Enter the IP address for the RoboSHOT HD-SDI camera into the address bar of a web browser.
  - You can obtain the IP address for the camera using the Vaddio IR Remote Commander. Aim at the camera and press the Data Screen button. The connected display shows the camera's IP address.
2. Log in as admin. The default password is password.



3. Navigate to the System page.
4. Select Choose File, then browse to the downloaded firmware and select it. The filename ends with .p7m.
5. Select Begin Firmware Update.



6. Read and understand the information in the Confirm dialog box. It's dull, but it could save you some time and aggravation.



7. Select Continue. A progress message box opens and the indicator light on the front of the camera turns yellow. If the update process presents warnings or error messages, read them carefully.
8. The camera reboots when the update is complete.

### Caution

*The camera must remain connected to power and to the network during the update. Interrupting the update could make the camera unusable.*

This update can take up to 5 minutes to complete; the pop-up message window will identify the progress of the update.

While you're waiting, you could try the following:

- Think about weather. That's always a safe topic.
- Name as many varieties of vegetable as you can think of.
- Do your best to avoid thinking about armadillos.

After the update is complete, the System page will display the new firmware version under System Information. Enjoy that 'New Firmware Smell'!

**If the update procedure is interrupted for any reason the product may need to be returned to Vaddio for updating. If the update does not seem to run, DO NOT TURN OFF THE PRODUCT OR UNPLUG IT. CALL TECH SUPPORT IMMEDIATELY.**

**If you have any questions call Tech Support at Vaddio. 763.971.4428 or 1-800-572-2011**

Vaddio is a brand of Legrand AV Inc. · [www.legrandav.com](http://www.legrandav.com) · Phone 800.572.2011 / +1.763.971.4400 · Fax +1.763.971.4464  
Email [av.vaddio.support@legrand.com](mailto:av.vaddio.support@legrand.com)

Visit us at [support.vaddio.com](http://support.vaddio.com) for firmware updates, specifications, drawings, manuals, and technical support information, and more.

Vaddio is a registered trademark of Legrand AV Inc. All other brand names or marks are used for identification purposes and are trademarks of their respective owners. All patents are protected under existing designations. Other patents pending.

©2019 Legrand AV Inc.

A brand of  **legrand**