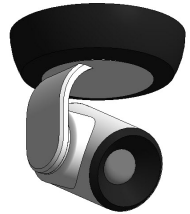


# REVIT CONTENT GUIDE



<b>Manufacturer:</b>	Vaddio
<b>File:</b>	Camera-Video-Conferencing-Vaddio-PTZ-RoboShot.rfa
<b>Type Catalog:</b>	Camera-Video-Conferencing-Vaddio-PTZ-RoboShot.txt
<b>Rendering file:</b>	Not Applicable
<b>Schedule file:</b>	Schedule - Camera-Video-Conferencing-Vaddio-PTZ-RoboShot.rvt

## Instance Properties

Construction	
Has In Ceiling Half Recessed Enclosure	<input type="checkbox"/>
Has In Wall Enclosure	<input type="checkbox"/>
Has Offset Dropdown Suspended Ceiling Mount	<input type="checkbox"/>
Has QuickCAT Universal Suspended Ceiling Mount	<input type="checkbox"/>
Has Suspended Ceiling Mount	<input type="checkbox"/>
Has Thin Profile Wall Mount	<input type="checkbox"/>
Graphics	
Camera Rotation Actual	0.000°
Camera Rotation Desired	0.000°
Camera Tilt Actual	0.000°
Camera Tilt Desired	0.000°
Mount Angle	0.000°
QuickCAT Post Extension	6.000
QuickCAT Post Location	0.000
Identity Data	
Accessory Part Description*	None Selected
Accessory Part Number*	None Selected
Equipment Number*	
Part Description*	Use Type Catalog
Part Number*	Use Type Catalog

## Type Properties

The family contains the following 1 types:  
 USE TYPE CATALOG (Values for this type are shown below)

Adsk Model Properties	
Humidity*	
Image Sensor*	
Lens Type*	
Resolution*	
Sales Region	
Signal to Noise Ratio*	
Storage Temperature*	
Wide Dynamic Range*	
Constraints	
Default Elevation	48.000

Identity Data	
Copyright*	Copyright © Legrand AV
Date Created*	February 28, 2019
Date Modified*	February 28, 2019
Description*	See Part Description
Equipment Abbreviation*	SC
Family Version*	1.0
Manufacturer*	Vaddio
Model*	See Part Number
Model Disclaimer*	Contact Vaddio For More Information
Product Documentation Link*	
Product Page URL*	
Type Image	-1
URL*	<a href="http://www.vaddio.com/">http://www.vaddio.com/</a>
Materials	
Camera Material	63906
Camera Trim Material	63905
Mount Material	75671
Mount Trim Material	63907

Half-tone text in the property tables indicates that the value is locked from editing.

\*Indicates Shared Parameter and can be scheduled

## Loading and Placing into the Project

One "Communication Device" family is supplied and may be loaded into a Revit project through all traditional methods. The camera requires a face host to be placed within the project (i.e. wall/ceiling). Also, ensure that the visibility settings within the project are modified to have the Communication Devices category visible.

## Project Behavior

Within the type and instance properties dialogues, the user will find useful information for scheduling purposes such as Resolution, Storage Temperature, Accessory Part Number and other unique properties of the model. In "Identity Data" the user will find information specific to Vaddio and the model, i.e.: family revision information, Legrand copyright information, part description, product URL and other specific data. \*See scheduling description below.

The family has certain mounting configurations that allow it to be recessed into a wall or ceiling. In these cases the family can be used to cut its host for better representation.

The model has different available configurations and if the model is misconfigured, it will produce an error box along with a message relaying the error in the part number and part description instance parameters.

## Instance Parameters

In the "Instance Parameters", the user has the following options to modify:

Equipment Number – For tagging separately placed instances.

Has In Ceiling Half Recessed Enclosure – For selecting the half recessed ceiling enclosure mounting configuration.

Has In Wall Enclosure – For selecting the recessed wall enclosure mounting configuration.

Has Offset Dropdown Suspended Ceiling Mount – For selecting the dropdown suspended ceiling mounted configuration.

Has QuickCAT Universal Suspended Ceiling Mount – For selecting the QuickCAT universal suspended ceiling mounted configuration.

Has Suspended Ceiling Mount – For selecting the suspended ceiling mounted configuration.

Has Thin Profile Wall Mount – For selecting the thin profile wall mounted configuration.

Camera Rotation Desired – For inputting the desired camera rotation angle. If the inputted angle lies outside of the allowable bounds, then it will be limited by the Camera Rotation Actual parameter.

Camera Tilt Desired – For inputting the desired camera tilt angle. If the inputted angle lies outside of the allowable bounds, then it will be limited by the Camera Tilt Actual parameter.

Mount Angle – For inputting the desired mount rotation angle for appropriate mounts only.

QuickCAT Post Extension – For inputting the desired post length for the QuickCAT mount.

QuickCAT Post Location – For inputting the desired post location for the QuickCAT along its slotted opening.

## Type Parameters

The camera represents a manufactured product. To this end the type parameters within the family should not be modified for Standard configuration. Please note:

- Product Page URL – Directs to the manufacturer’s online listing of the product
- Product Documentation Link – Directs to the product’s online specification sheet
- Equipment Abbreviation – This parameter exists for filtering schedules. \* See scheduling description below
- Family Version – Lists the current revision number of the family

## Visibility

For best performance within a project all model geometry is turned off in Plan View when placed in the product’s intended orientation. It is then represented by annotation symbols that will be visible in plan view. For ease of use all geometry is assigned to the category Communication Devices.

## Rendering

When the family is loaded into a project standard Vaddio materials are imported. The materials may be modified, though ensure that the modified selection matches an actual manufacturer supplied option.

## Schedule Creation

Vaddio products may be scheduled utilizing the schedule view in the provided project file. Select and copy (Ctrl+C) the schedule from the sheet view and paste it (Ctrl+V) into a sheet in your project. The schedule filters are set to look for only families with Manufacturer as “Vaddio” and Equipment Abbreviation as “SC”.