

Release Notes – 1/7/2016

Quick-Connect USB Mini Version 1.2.3

Released 1/7/2016

Component	Version
Database	2.3.2
Middleware	2.1.0

New Features and Enhancements

- N/A

Fixed Issues

- N/A

Known Issues

- N/A

Backward Compatibility

- N/A

Interoperability

- N/A

Vaddio Quick-Connect USB Mini Firmware Update Instructions For Version 1.2.3

PLEASE NOTE:

****Vaddio recommends users perform a factory reset once the update is complete.**

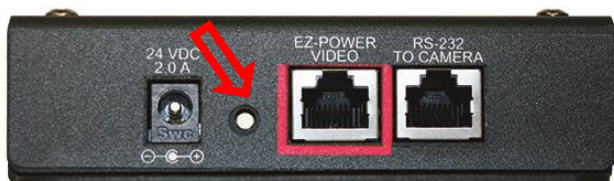
IMPORTANT: Performing a factory reset will cause all stored settings to be lost.

USB Mini must be in Network / Control Mode to update:

When the Quick-Connect is plugged into the computer it automatically defaults into "video mode"

*To get it into Network / Control mode:

-There is a white button on the back of the interface that needs to be pressed. This will put the interface into Network / Control mode.



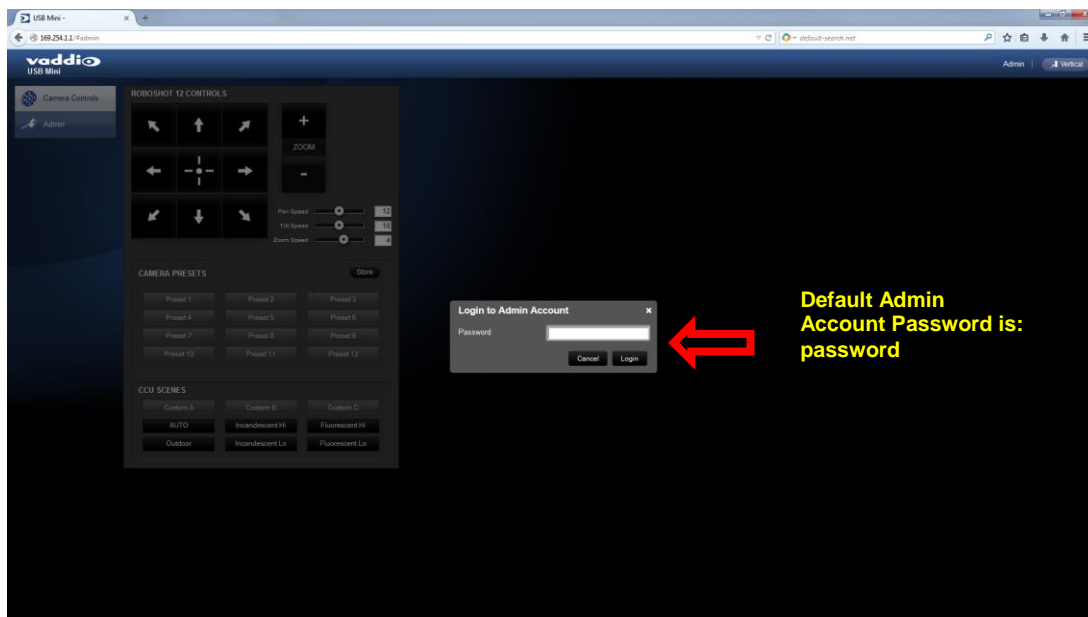
-This device will show up in a list of network adapters on the computer

-If you need to check which mode the interface is in, open up your browser and enter in IP: 169.254.1.1 to access web control. If you have access to the web control then you are in the Network mode.

Enter in the IP address for the Quick-Connect USB Mini into a browser:

Screen Shot: Admin Log-in

By selecting the Admin Menu Bar, the Admin Login password pop-up window will appear and await the entry of the password. By entering the Admin menus, 10 more menu keys appear on the left side of the screen.



Screen Shot: Admin Menu - System Menu

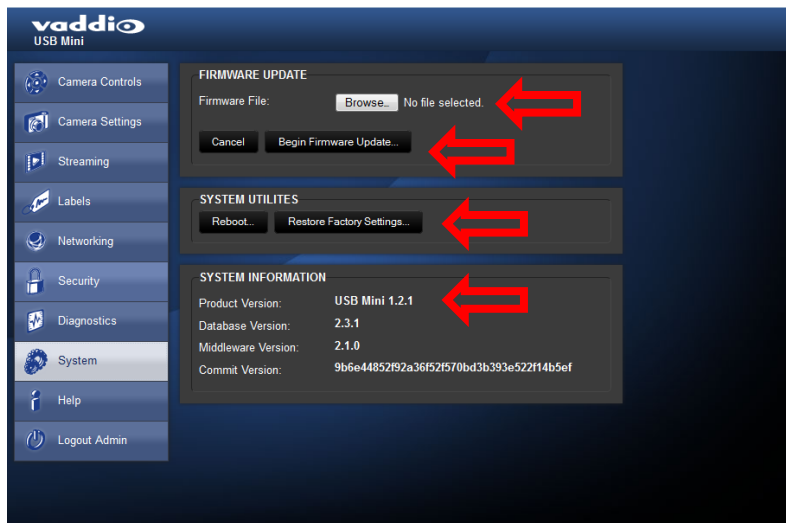
The System Menu is where the System Info is displayed and Firmware Updates are performed. There will be firmware updates and upgrades over the life of the Quick-Connect. The file for the firmware update is chosen in this menu and the update is started here too.

-You can find the file located on the Vaddio website here: http://support.vaddio.com/resources#ani_cat_3 (scroll down to “Software Updates”) File name: Quick-Connect USB Mini Firmware Update 1.2.3

-A remote system Reboot and Restore to Factory Presets is also available.

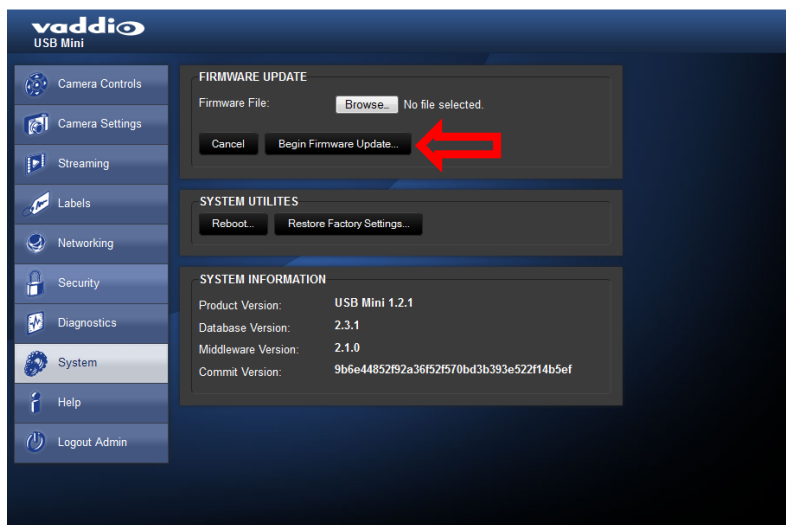
-You can reference which product version is currently loaded on your device here as well.

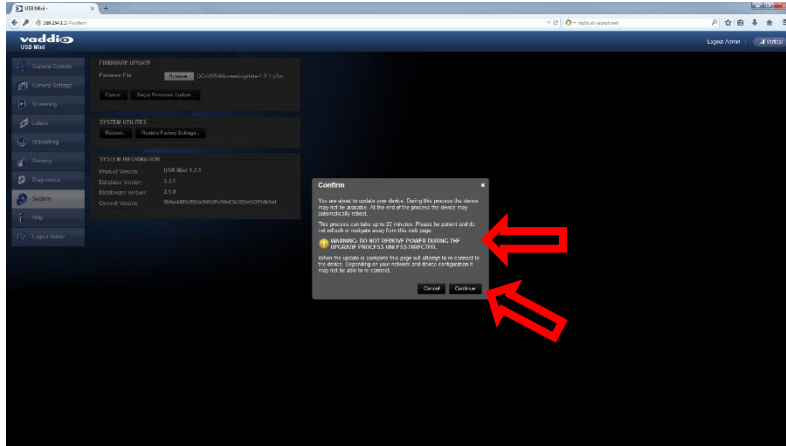
***NOTE: Image below shows version 1.2.1, this current update is for 1.2.3**



Screen Shot: Admin Menu - Update Confirmation

After clicking on “Begin Firmware Update...” a confirmation pop-up and warning will be displayed. Please contact Vaddio Tech support for assistance with updates. Please read and completely understand the pop-up warnings, as it is easy to lose patience waiting for updates. Click on continue to start the update. (Screen image below is for 1.2.1, this update is for version 1.2.3)

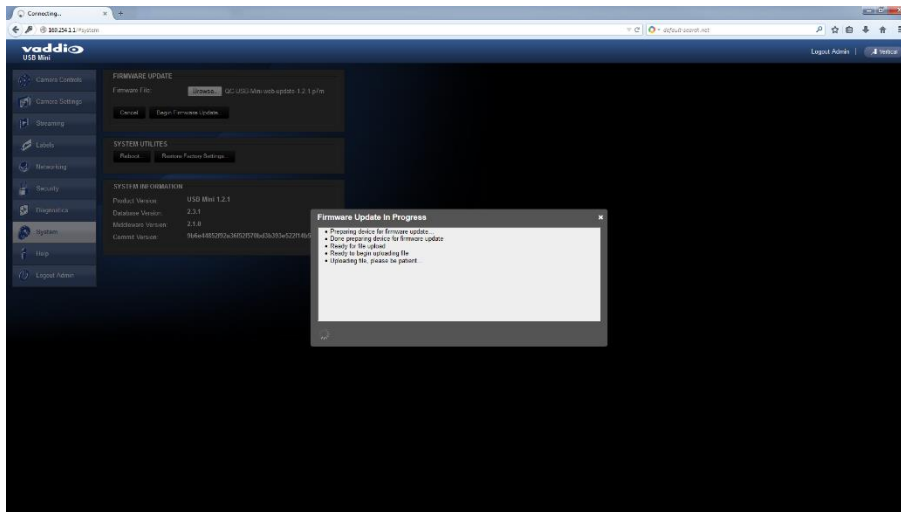




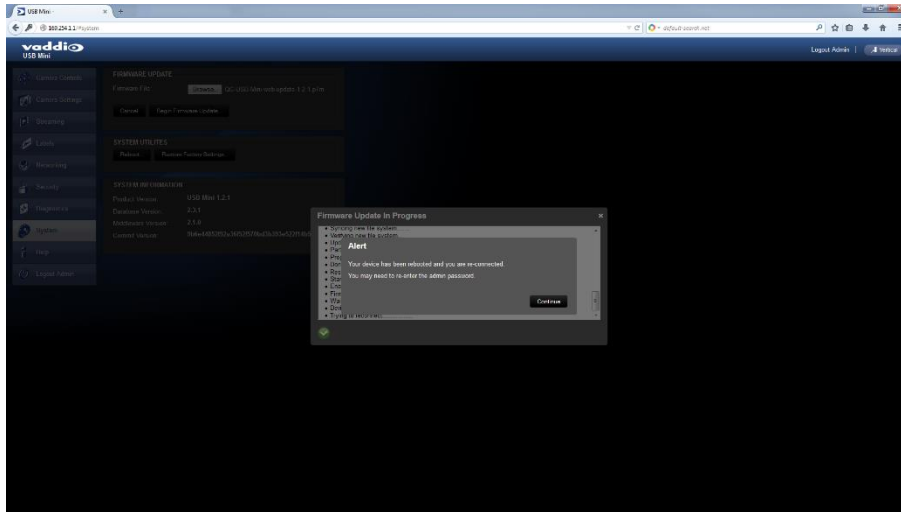
Screen Shot: Admin Menu - Update in Progress

After the firmware load has been started, a pop-up screen will advise patience and notify, in terms of a percentage completed, the progress of the firmware update load.

****Again, please don't interrupt the firmware load.**



Once firmware is uploaded successfully you should get an "Alert" message and the system will automatically reboot and you will be taken back to the login page to begin using your device.



PLEASE NOTE:

****Vaddio recommends users perform a factory reset once the update is complete.
IMPORTANT: Performing a factory reset will cause all stored settings to be lost.**

If you have any questions call Tech Support at Vaddio. 763.971.4428 or 1-800-572-2011.

Quick-Connect USB Mini Release Notes

OLDER VERSION Release: 1.2.2

Release Date: 1/6/15

Component	Version
Database	2.3.2
Middleware	2.1.0

New Features and Functions

- Support for Vaddio ZoomSHOT 20

Fixed Issues

- N/A

Known Issues

- N/A

Interoperability Testing and Findings

- Same as previous release.

Backward Compatibility

- Same as previous release.

User Notes

- Product update takes approximately 3-5 minutes to complete.



**OLDER VERSION
Release Notes**

Quick-Connect USB Mini Release Notes

OLDER VERSION Release: 1.2.1

Component	Version
Database	2.3.0
Middleware	2.1.1

New Features and Functions

- None

Fixed Issues

- **RoboSHOT CCU Scene Setting** – Modified CCU scene setting to support the RoboSHOT 1.0.1 software release.

Known Issues

- N/A

Interoperability Testing and Findings

- N/A

Backward Compatibility

- Quick-Connect USB Mini can be field upgradeable adding RoboSHOT support to existing units.