

# ProductionVIEW HD-SDI MV

---

## Current Release

### **ProductionVIEW HD-SDI MV Control V01.00.19**

April 26, 2019

#### New Features

- Added support for RoboSHOT 12E & 30E CAT-5 cameras.
- Added support for RoboSHOT 12E & 30E HDBT cameras.
- Added support for RoboSHOT 12E & 30E SDI cameras.
- Added support for the RoboSHOT 40 UHD camera.
- Added support for the ZoomSHOT 30 camera.

#### Notes

- This firmware update is required for the ProductionVIEW HD-SDI MV controller to recognize some DocCAM 20 HDBT and RoboSHOT HD-SDI cameras.

## Release History

### **ProductionVIEW HD-SDI MV Control V01.00.18**

November 20, 2017

#### New Features

- Added support for the RoboSHOT IW camera.
- Added support for the DocCAM 20 HDBT camera.

### **ProductionVIEW HD-SDI MV Control V01.00.17**

November 28, 2016

#### New Features

- Added support for RoboSHOT 12 & 30 HDBT cameras.

### **ProductionVIEW HD-SDI MV Control V01.00.16**

July 5, 2016

#### New Features

- Added support for the RoboSHOT 20 UHD camera.

### **ProductionVIEW HD-SDI MV Control V01.00.15**

January 22, 2016

#### **New Features**

- Added HDMI Color Space option to menu.

#### **Improvements**

- Enhanced functionality of white balance and iris.

#### **Notes**

- The ProductionVIEW HD-SDI MV's video firmware must be updated to at least 10\_26\_2015 for the HDMI output Color Space controls to properly execute.

### **ProductionVIEW HD-SDI MV Video 10\_26\_2015**

October 26, 2015

#### **Improvements**

- Update to video chip to allow HDMI output color space to be set.

#### **Notes**

- The ProductionVIEW HD-SDI MV's control firmware must be updated to at least V01.00.15 to have the menu options to set the HDMI output color space.

### **ProductionVIEW HD-SDI MV Control V01.00.14**

October 22, 2015

#### **New Features**

- Added support for RoboSHOT 12 & 30 HD-SDI cameras.

#### **Improvements**

- Improved Tri-Sync performance.
- Improved preset configuration.

### **ProductionVIEW HD-SDI MV Control V01.00.13**

May 18, 2015

#### **New Features**

- Added support for the ZoomSHOT 20 camera.
- Added support for the Panasonic AW-HE40 camera.
- Added support for the Panasonic AW-HE130 camera.

#### **Improvements**

- Removed Serial Info option from serial interface help menu.
- Changed System Menu option from 'Lock Program' to 'Pgm Cam Lock'.
- Improved MultiVIEW output performance.

### **ProductionVIEW HD-SDI MV Control V01.00.12**

February 23, 2015

#### **New Features**

- Added support for the Sony SRG-300H camera.

### **ProductionVIEW HD-SDI MV Control V01.00.11**

January 30, 2015

#### **New Features**

- Added support for the HD-20SE camera.

#### **Improvements**

- Improved transitions.

### **ProductionVIEW HD-SDI MV Control V01.00.10**

October 31, 2014

#### **New Features**

- Added support for RoboSHOT 12 & 30 cameras.
- Added support for the Sony SRG-120DH camera.

### **ProductionVIEW HD-SDI MV Control V01.00.09**

June 23, 2014

#### **New Features**

- Added support for the Canon XU-81 camera.

### **ProductionVIEW HD-SDI MV Control V01.00.08**

August 13, 2013

#### **Improvements**

- Added Tally functions.

### **ProductionVIEW HD-SDI MV Control V01.00.07**

June 13, 2013

#### **New Features**

- Added support for the HD-22 camera.
- Added support for the HD-30 camera.
- Added support for the ZoomSHOT camera.

## Firmware Update Instructions – ProductionVIEW HD-SDI MV

### Requirements

- A PC with the following downloaded onto it:
  - The latest version of the Vaddio Loader program.
  - The ProductionVIEW HD-SDI MV firmware file.
    - Control firmware is .hex file format, video firmware is .flash file format
- A serial connection between the PC and the ProductionVIEW HD-SDI MV controller, which can be achieved with either:
  - A USB to serial cable connecting a USB port on the computer to the DE-9 RS-232 port on the controller.
  - A straight serial cable connecting a DE-9 serial port on the computer to the DE-9 RS-232 port on the controller.
- A small implement that can reach the recessed white button next to the ProductionVIEW's power connector.
- 45-50 minutes to complete the update.

**Please note that part of the firmware update process is a factory reset of the controller, which removes all settings and presets. You may wish to document your presets before you start so that you can easily re-save them after the update process is complete.**

### Step-By-Step Process

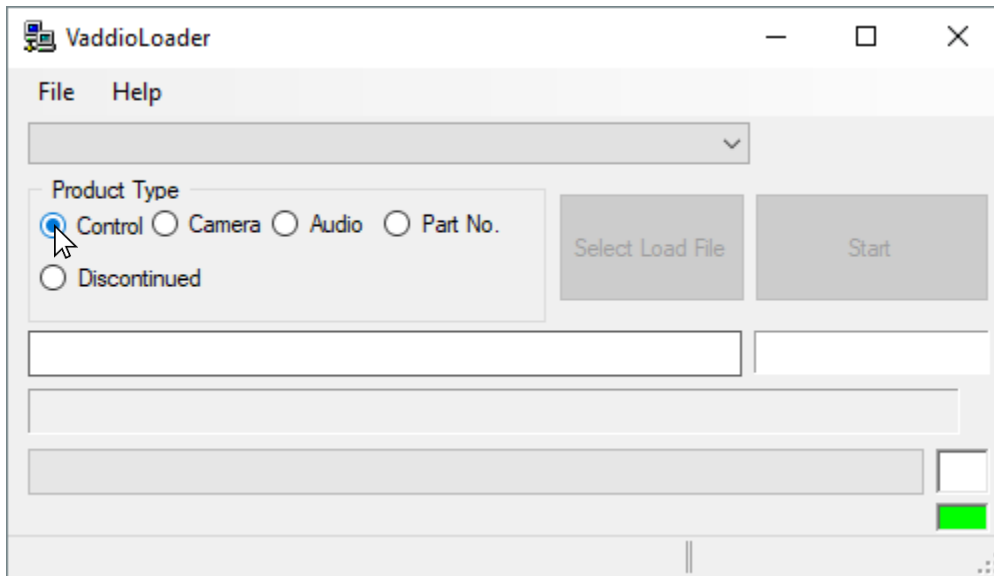
1. Connect the PC and the ProductionVIEW HD-SDI MV controller.



Example connection diagram – your cable color may be less fun.

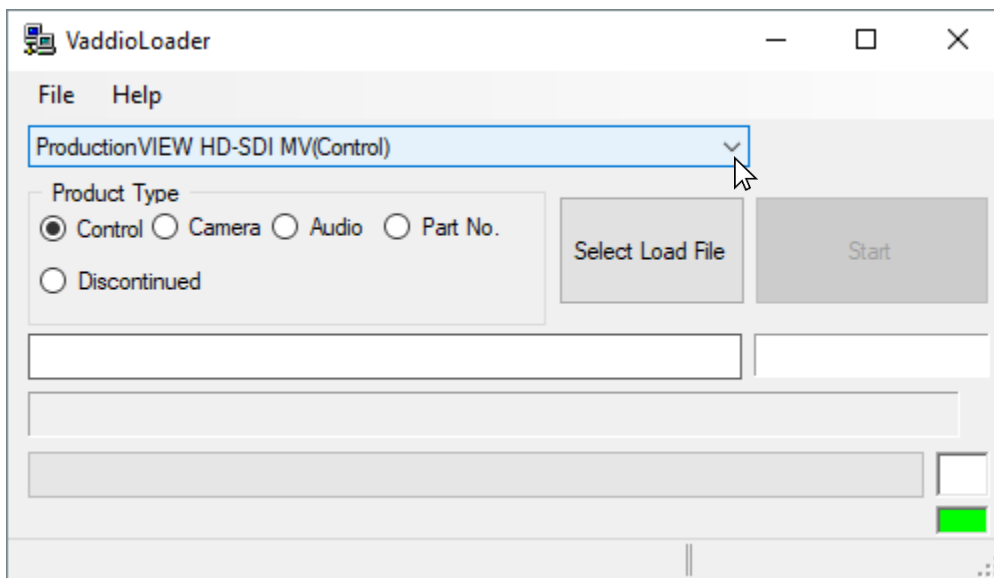
2. Open Vaddio Loader on the PC and choose the COM port you have connected to the ProductionVIEW HD-SDI MV if prompted (if not prompted, you can check or change which is selected by going to File > Setup COM#).

3. Select 'Control' under Product Type.

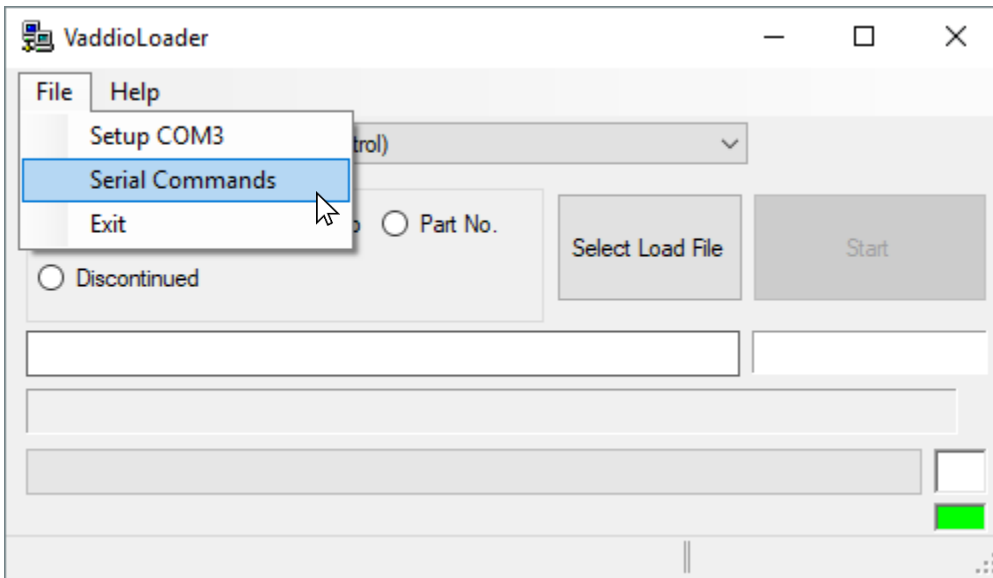


4. From the drop-down menu select one of the following:

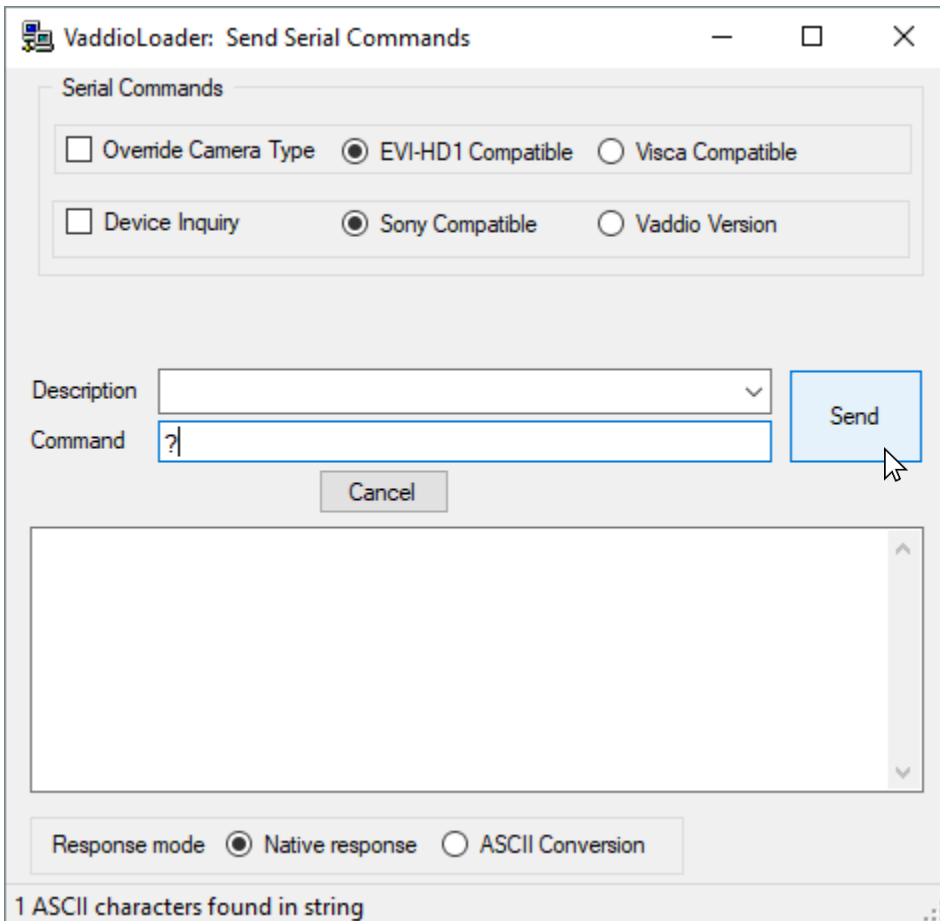
- ProductionVIEW HD-SDI MV(Control) if you're updating the control (.hex) firmware.
- ProductionVIEW HD-SDI MV(Video) if you're updating the video (.flash) firmware.



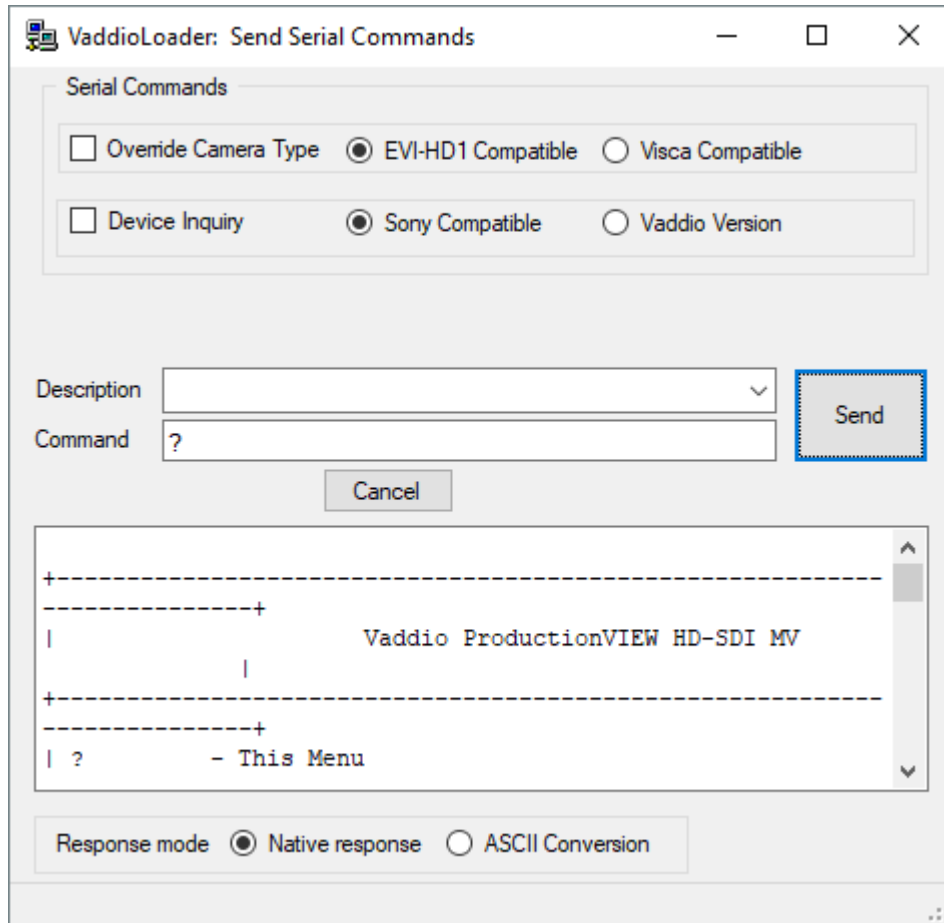
5. Go to File > Serial Commands. A new Serial Commands window will open.



6. In the new window that opens, insert a '?' into the command line below and select 'Send'.



7. You should get a response that looks something like this:



8. Once communication has been verified, close the Serial Commands window to return to the main Vaddio Loader interface.

9. Put the controller into firmware-update mode:

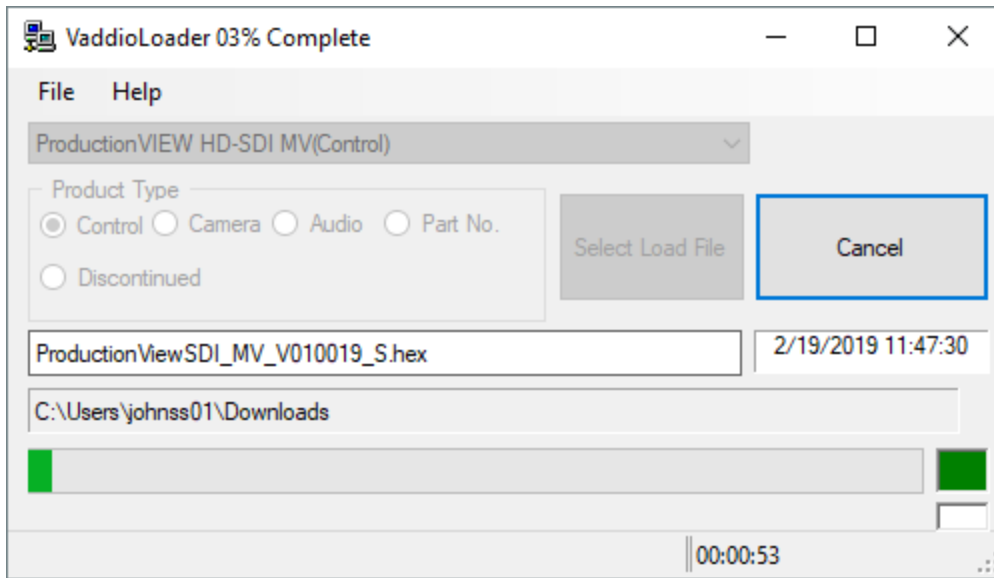
**For Control (.hex) firmware:**

- 1) Disconnect the power connector.
- 2) Press and hold the recessed white button next to the power port while inserting the power connector.
- 3) Release after the Power button on the control surface lights (the LCD screen will also light up but display no text).

**For Video (.flash) firmware:**

- 1) With the ProductionVIEW powered on and through its boot process, press and hold the recessed white button next to the power port.
- 2) When 'Video Passthrough' is displayed on the LCD screen, release the white button.

10. In Vaddio Loader, select 'Select Load File' and choose the firmware file you've downloaded.
11. Select 'Start'. After a few moments the boxes in the lower right should begin to rapidly flash green and red, and the progress bar will slowly begin to fill. The firmware update will take 45-50 minutes, **do not disconnect the controller or stop the upload while it is happening.**



While you're waiting, you could try the following:

- Go grab lunch, it's an important meal and it's also important to take care of yourself.
  - Muse on the concept of a fantasy world where all wizards are allergic to their magic. Would they still use it? Would it greatly impede magical advancement?
  - Lend assistance to a task for someone nearby. We live in an increasingly disconnected world, fight against the entropy by caring for your fellow humans.
12. Once the firmware load is complete, power-cycle the controller to let it boot normally.
  13. In the controller's LCD menu screen, go to System Menu and select Clear Memory. The controller will reboot with factory settings and you will need to set up your presets again.
  14. If you need to update another firmware version in the ProductionVIEW HD-SDI MV (control or video), return to step 9. If not (or if this is your second pass through) enjoy your new firmware!

**If the update procedure is interrupted for any reason the product may need to be returned to Vaddio for updating. If the update does not seem to run, DO NOT TURN OFF THE PRODUCT OR UNPLUG IT. CALL TECH SUPPORT IMMEDIATELY.**

**If you have any questions call Tech Support at Vaddio. 763.971.4428 or 1-800-572-2011**

Vaddio is a brand of Legrand AV Inc. · [www.legrandav.com](http://www.legrandav.com) · Phone 800.572.2011 / +1.763.971.4400 · Fax +1.763.971.4464  
Email [av.vaddio.support@legrand.com](mailto:av.vaddio.support@legrand.com)

Visit us at [support.vaddio.com](http://support.vaddio.com) for firmware updates, specifications, drawings, manuals, and technical support information, and more. Vaddio, the Vaddio logo, and RoboSHOT are trademarks or registered trademarks of Legrand AV Inc. All other brand names or marks are used for identification purposes and are trademarks of their respective owners.

©2019 Legrand AV Inc.

A brand of  **legrand**