

# EZIM™ HD-SDI SLOT CARD FOR THE HD-18

**Vaddio™ EZIM HD-SDI Slot Card for the HD-18 High Definition Pan/Tilt/Zoom Camera**  
**Model Number 998-6900-007**

The EZIM (EZCamera™ Interface Module) HD-SDI Slot Card for the Vaddio ClearVIEW™ HD-18 High Definition PTZ camera provides additional professional grade, high quality HD-SDI or SDI digital video outputs and enhanced functionality when used with the Vaddio Quick-Connect™ family of camera controllers.

When inserted into the card slot of the HD-18 camera, the EZIM HD-SDI Slot Card will provide two (2) HD-SDI or SDI outputs in addition to the analog (YPbPr and CVBS) video outputs on the back of the camera, with all signals available simultaneously.

Using only the most advanced and leading edge 3Gb/s single link HD-SDI components available today, the EZIM HD-SDI Slot Card produces remarkable picture quality with video resolutions of up to 1080p/60Hz over a single coax cable. The EZIM HD-SDI Slot Card also features a 36VDC RJ-45 EZCamera connector for powering HD-18 up to a distance of 500' (152.4m) when using the Vaddio Quick-Connect CCU controller.

True to form, the active electronics built-in the Vaddio HD-18, including HSDS™, allows for maximum flexibility in system design and configuration. With concurrent analog (YPbPr & CVBS) and digital (HD-SDI & SDI) outputs available, inexpensive monitoring solutions can be used in conjunction with the broadcast quality digital monitors for a cost effective HD-SDI video solution. The power and control options available allow for the HD-18 to be powered and controlled with different Quick-Connect systems (Quick-Connect CCU, Quick-Connect HD-18 Interface-SR, and the Quick-Connect DVI/HDMI - SR Interface).

Overall, the combination of the EZIM HD-SDI Slot Card and HD-18 PTZ camera with its many available video and control options is a remarkable choice for a wide range of HD-SDI digital video, as well as HD analog video applications.



**Figure 1:**  
EZIM HD-SDI  
Slot Card

## WHAT'S INCLUDED

- Vaddio EZIM HD-SDI Slot Card
  - Documentation
- (Note: HD-18 Camera not included)

## TECHNICAL FEATURES

### Advanced Components

The EZIM HD-SDI Slot Card uses only the most advanced and leading edge components available today. Combined with the HD-18 Camera, the Slot Card produces astounding picture quality and is capable of transmitting a 3Gb/s single link HD-SDI digital video resolutions up to and including 1080p/60Hz over a single coax cable.

### SMPTE Video Standards

The EZIM HD-SDI Slot Card 3Gb/s HD-SDI transmitter generates a SMPTE compliant serial digital output with video resolutions including SMPTE 424M, SMPTE 292M, SMPTE 259M-C (please see resolution tables for the Slot Card).

### Integrated Design for use with the HD-18

From the earliest product plans for the HD-18, the EZIM HD-SDI Slot Card was designed to be auto-recognized by the HD-18 and process the video signals from the camera to ensure the correct video timings (under the SMPTE standards) and video positioning/sizing.

### Simultaneous Analog and Digital Outputs

With the EZIM HD-SDI Slot Card, the HD-18 camera is capable of both Analog (YPbPr - Y/C or CVBS) and Digital video outputs (DVI-D or HDMI with included DVI-D to HDMI adapter cable) to allow the utmost flexibility in system design demanded by today's best integrators.

### The Hardware:

The high quality hardware for the EZIM HD-SDI Slot Card includes Captive, Spring Loaded Thumb Screws and 3Gb/s compliant carrier class BNC connectors with Gold Finish Body and Contacts.

## TECHNICAL IMAGES

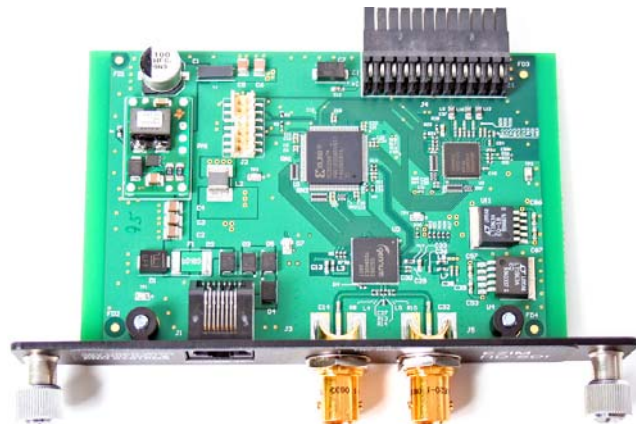
**Figure 2: EZIM HD-SDI Slot Card - Front View**

- Two (2) HD-SDI/SDI Outputs on Circuit Board Edge Mount (3Gb/s compliant) Carrier Class BNCs with Gold Finish Body and Contacts
- One (1) RJ-45 Jack 36VDC used to Power HD-18 Camera and Card with the Quick-Connect CCU
- Two (2) Captive, Spring Loaded, Retractable Thumb Screws



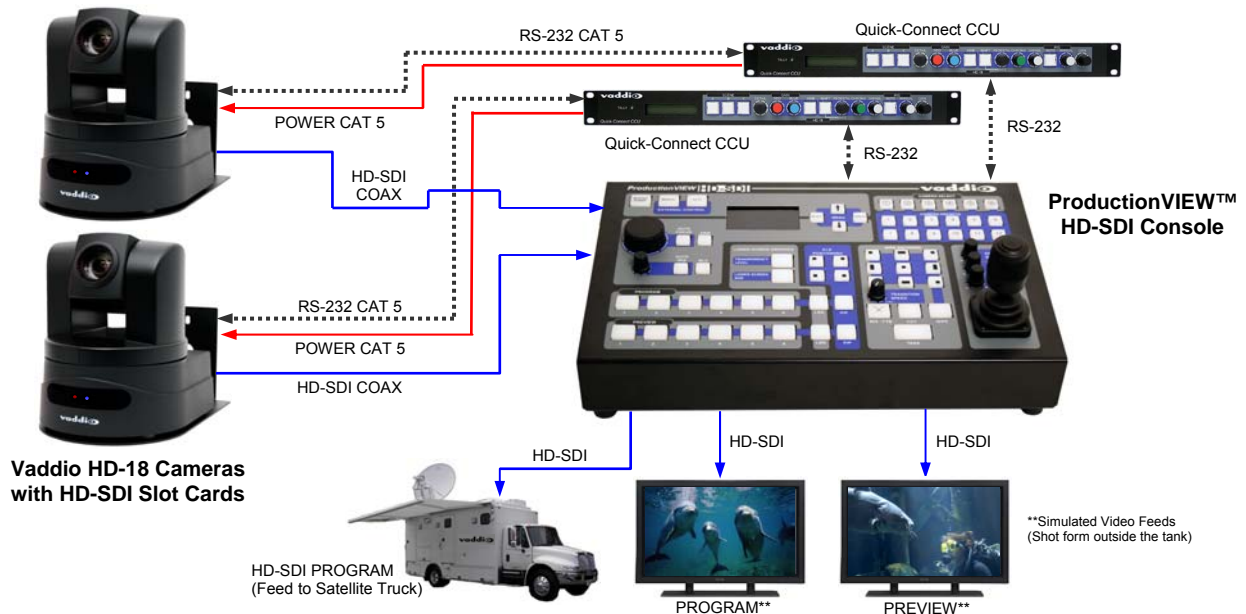
**Figure 3: EZIM HD-SDI Slot Card - Top View**

- 3Gb/s HD-SDI/SDI transmitter, generating a SMPTE 424M, SMPTE 292M, SMPTE 259M-C compliant serial digital output signal with integrated low noise VCO and integrated cable driver.
- 24-Pin Self Guiding Blind Mating Interface Connector
- Power Module provides power to the HD-18 Camera and EZIM HD-SDI Slot Card (depending on the configuration)
- Signal processing for auto recognition of the HD-SDI Slot Card and for auto positioning of the video image



## SYSTEM CONFIGURATION

Two (2) HD-18 Cameras with EZIM HD-SDI Slot Cards, Quick Connect CCUs and ProductionVIEW HD-SDI 3Gb/s Seamless Switcher



## TECHNICAL SPECIFICATIONS

General Specifications: HD-SDI Slot Card for HD-18 Camera	
Part Number	998-6900-007 - For use with the Vaddio HD-18 PTZ Camera Only
HD-SDI Output:	Two (2) HD-SDI/SDI Outputs on Circuit Board Edge Mount (3Gb/s compliant) Carrier Class BNCs with Gold Finish Body and Contacts
Power Jack:	One (1) RJ-45, 36VDC used to Power HD-18 Camera and Slot Card with the Quick-Connect CCU
Slot Card Connection to Camera	One (1) 24-pin Self Guiding Blind Mating Interface Connector Two (2) Captive, Spring Loaded, Retractable Thumb Screws
HD-SDI Transmitter	3Gb/s HD-SDI/SDI transmitter, SMPTE 424M, SMPTE 292M, SMPTE 259M-C compliant Serial Digital Outputs
Dimensions and Weight:	With Connectors and Mounting Plate: 5.875" (149.23mm) W x 4.25" (107.95) D, 0.3lbs (.1360772 kg)
Design & Mfg	Designed & Made in the USA

### HD-SDI/SDI Resolution Table and Expected Cable Distances

Using the ProductionVIEW HD-SDI Console and the HD-18 with HD-SDI Slot Card, the expected HD-SDI/SDI cable distances are:

Resolutions:	SMPTE STD	Cable Distances*
720p	SMPTE 292M	Max. Length: 754.543 ft. (230m)
1080i	SMPTE 292M	Max. Length: 754.543 ft. (230m)
1080p**	SMPTE 424M	Max. Length: 459.287 ft. (140m), 1080p/59.94/60/50 - 3Gb/s compliant
480i	SMPTE 259M	Max. Length: 820.179 ft. (250m)
576i	SMPTE 259M	Max. Length: 820.179 ft. (250m)

\*Distances are approximate and based on using Belden 1694A coax cable. Results may vary according to the quality of cable used.

\*\*Tested with the 3Gb/s HD-SDI Receivers in the ProductionVIEW HD-SDI Console.