

## ClearVIEW HD-19 Version 01.02.06

---

### Release Notes – March 1, 2017

Affected firmware

Component	Version
Camera/Control	01.02.06

### Fixed Issues

- Presets with manual focus now retain the manual focus as part of the preset.
- In some cases, the camera failed to complete its boot sequence when connected to a PCC Premier precision camera controller. This has been fixed.
- A customer reported that cameras sometimes went to black and white after booting. This has been fixed.

### Known Issues

At this time there are no known issues with this release.

### Backward Compatibility

No backward compatibility issues have been found in testing.

## Firmware Update Instructions

You will need these items:

- A computer with a serial port, or a USB to serial adapter
- Cat-5 cable
- RS-232 Adapter (998-1001-232)

You will need this software:

- Vaddio Loader, available from [support.vaddio.com](http://support.vaddio.com) – we recommend installing the latest version if you have not updated your copy lately
- The camera firmware update file(s)

### Note

*The screen shots in this section are examples only. When you do this procedure, select the camera you need to update and the firmware update file(s) for that camera.*

### Before you start, make a note of these:

- The COM port that your computer uses
- The current positions of the camera's DIP switches
- The current positions of the camera's rotary switch
- The firmware component(s) that you need to upgrade - depending on the camera and the update, this may be Camera/Control, Video, Motors, or Slot Card. Some updates affect more than one component, and require more than one update file to be loaded.

### Download the firmware update:

Locate the link to download the firmware update from the website (ClearVIEW HD-19 Camera/Control Update 01.02.06, under the Software Updates heading), and click it. The file that downloads to your computer is HD19\_Cam\_V010206\_S.hex.

This is a *Camera/Control* update.

- When you set the camera's switches for the update, use the *camera/control* switch settings
- When you set up the firmware load using the Vaddio Loader, select *ClearVIEW HD-19 (Camera/Control)* as the product.

### Set everything up:

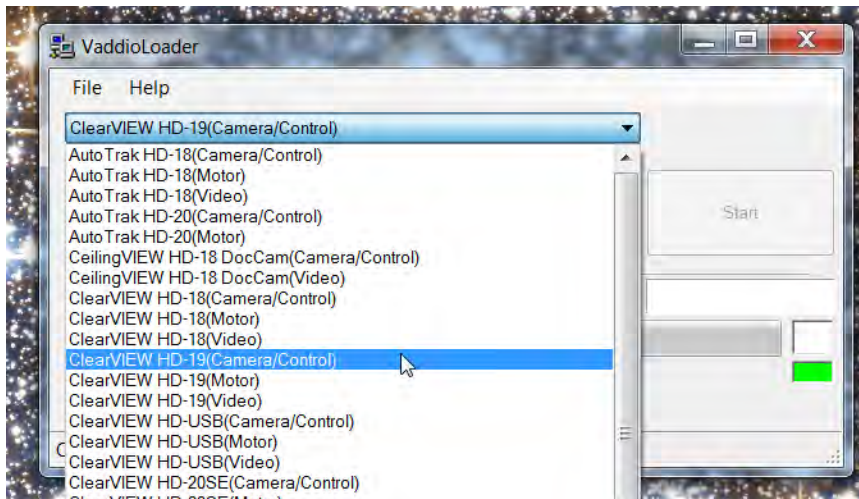
1. Set the camera's switches according to the firmware component you are updating.
  - **Camera/Control:** Rotary switch to position A, DIP switch 3 up, and DIP switch 10 down
  - **Motors:** Rotary switch to position B, DIP switch 10 down
  - **Video:** Rotary switch to position C, DIP switch 3 up, and DIP switch 10 down
2. Cycle power to the camera. When it boots, the power indicator does not light, but the red Tally indicator does. This indicates boot loader mode.
3. Connect your computer's serial port to the RS-232 port on the camera using the appropriate adapter with the Cat-5 cable.

**Start the update:**

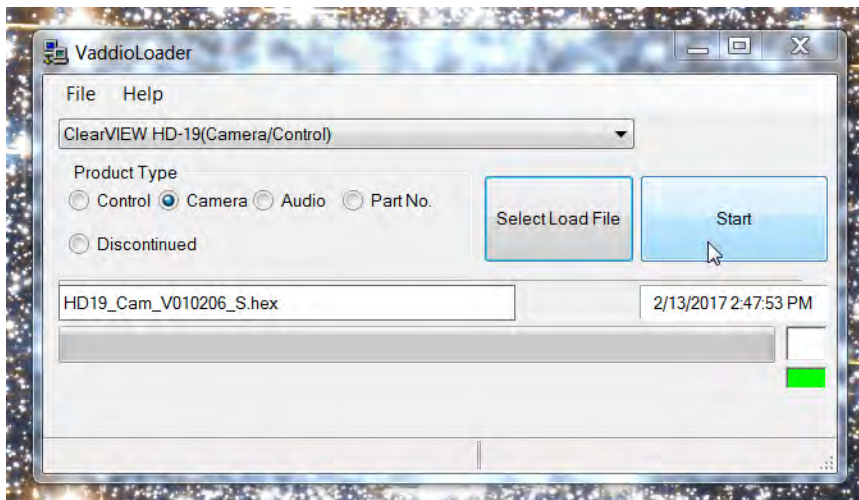
1. Open the Vaddio Loader.
2. Select the appropriate COM port if necessary.
3. Select Camera as the Product Type.
4. Select your camera and update type from the product list. It's likely to be a different item than what this screen shot shows.

**Note**

The screen shots in this section are examples only. When you do this procedure, select the camera you need to update and the firmware update file(s) for that camera.



5. Click Select Load File, browse to the firmware update file that you downloaded, and select it.
6. Check the filename in the box to be sure it's the right one. (This is likely to be a different file than what is shown in the screenshot.)
7. Click Start. The colored box at the lower right flickers green and red, and the progress bar indicates progress.



Leave the Vaddio Loader open until the firmware finishes loading.

8. After the firmware load is finished, set the DIP switches and the rotary switch to their original positions.
9. Reboot the camera.

## Firmware Release History: ClearVIEW HD-19 Version 01.02.03

Release Notes – March 18, 2015

Affected firmware

Component	Version
Camera/Control	01.02.03
Motors	2.0.1
Vaddio Loader	

### New Features and Functions

Code changes include:

- Common Motor Code – same motor code for Legacy cameras
- Add hardware diagnostics with LED blink indicators
- Prevent VISCA commands from processing during standby
- Widen IR tables for increased compatibility with some IR extenders
- Corrected standby error which could allow video to pass

