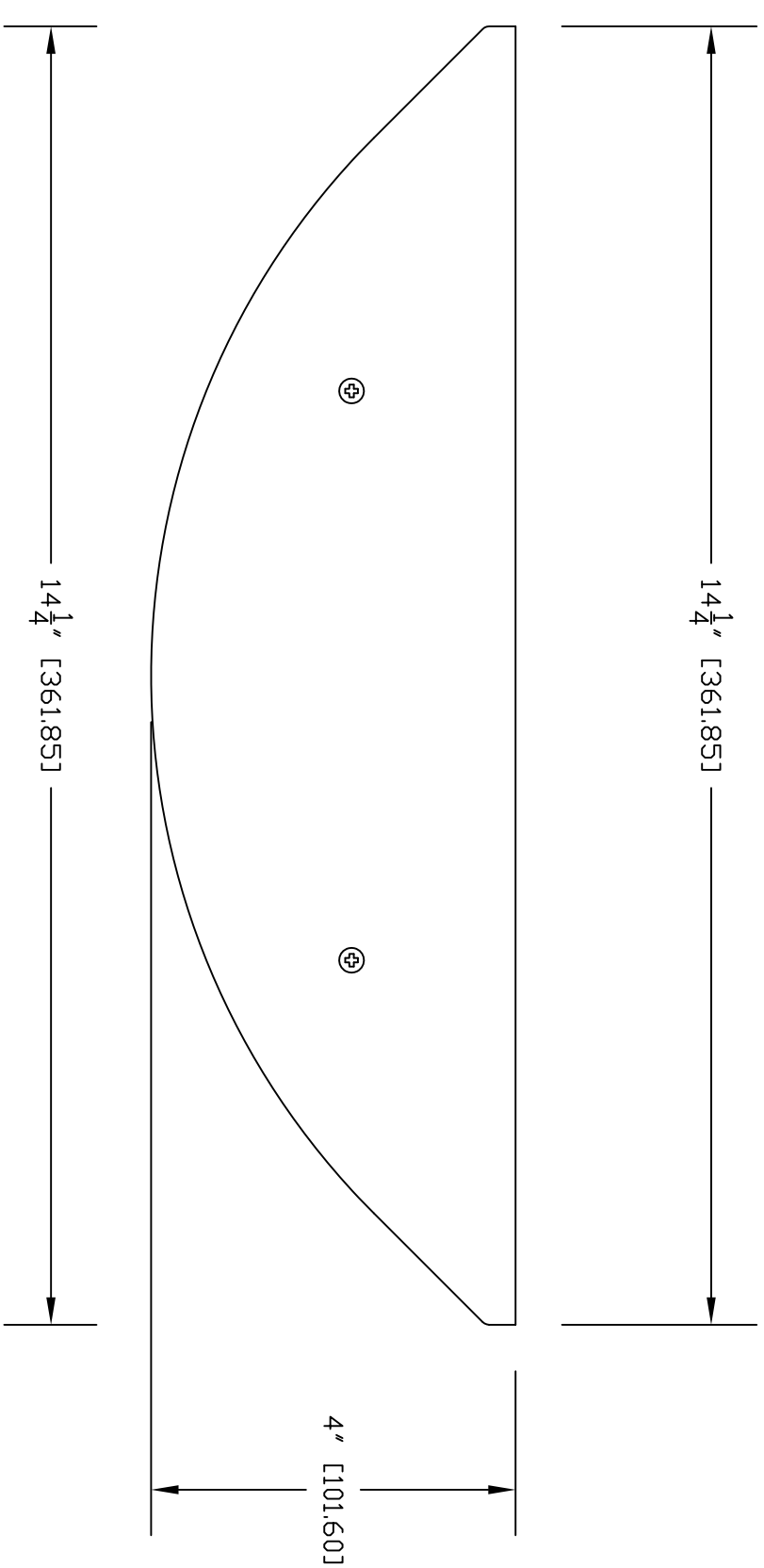
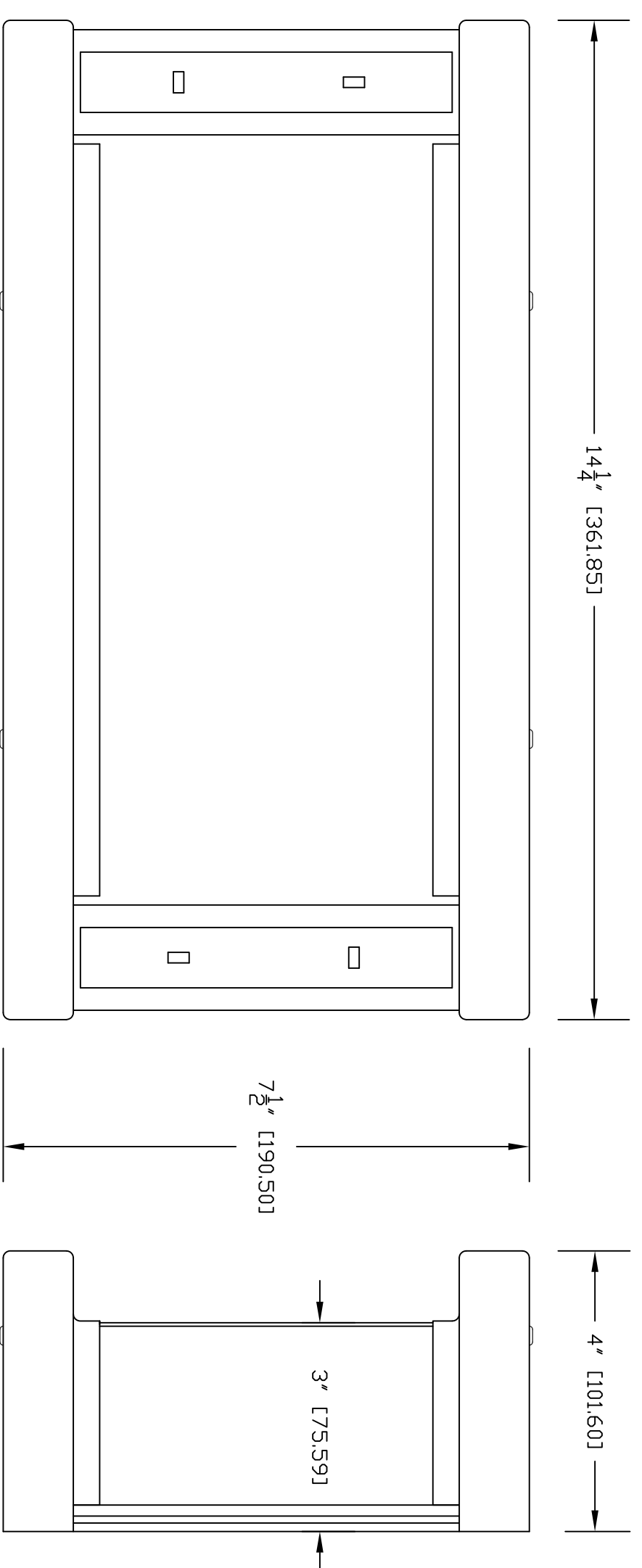


COVER VIEW
FRONT ASSEMBLY

TOP &
BOTTOM
VIEW



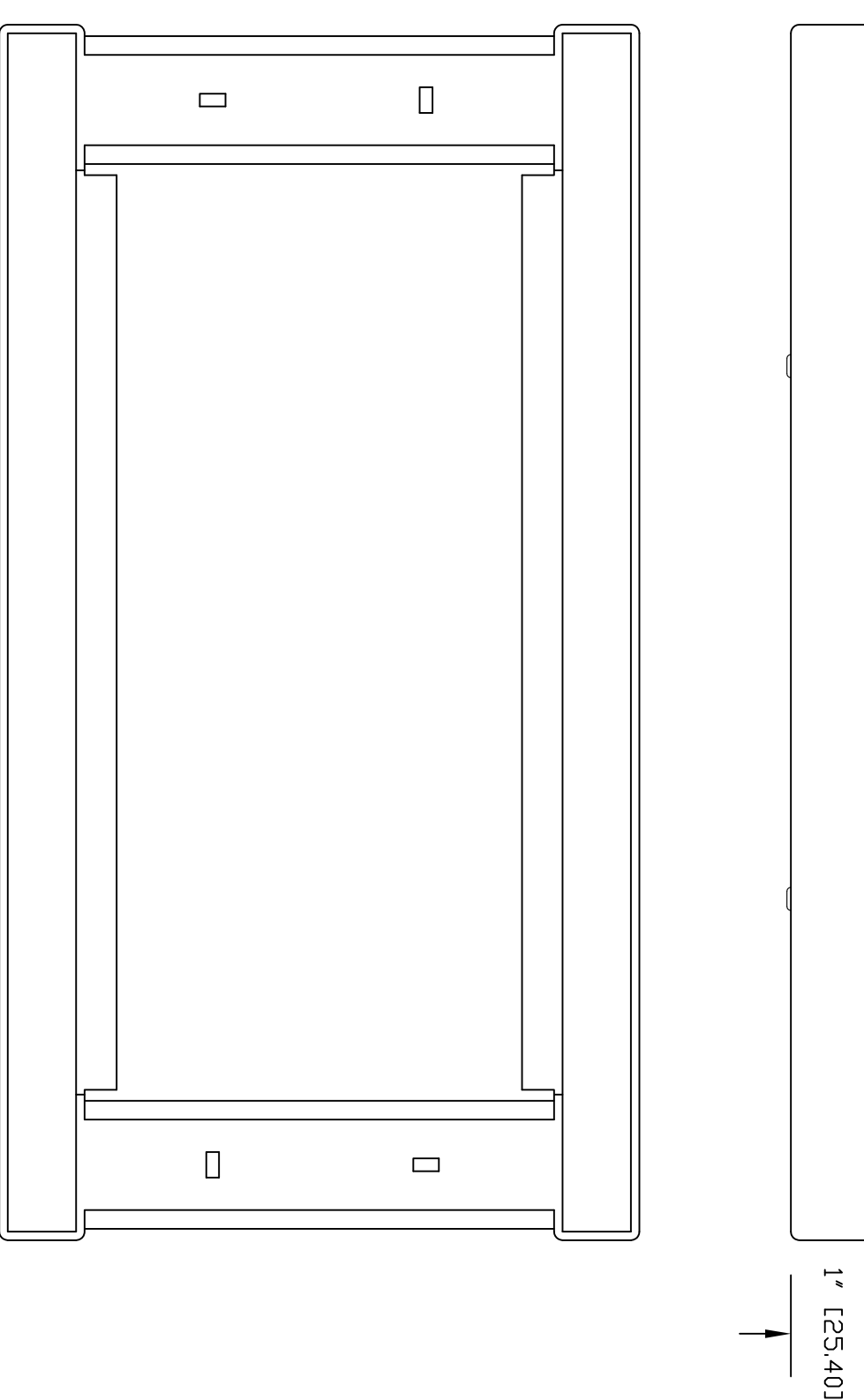
SIDE
VIEW



FRONT
VIEW

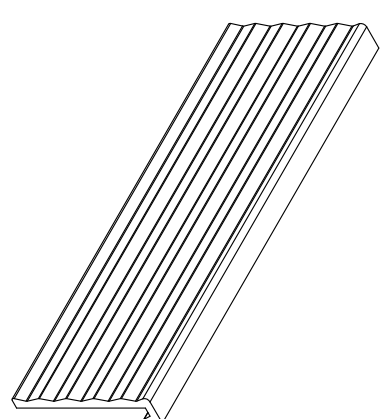
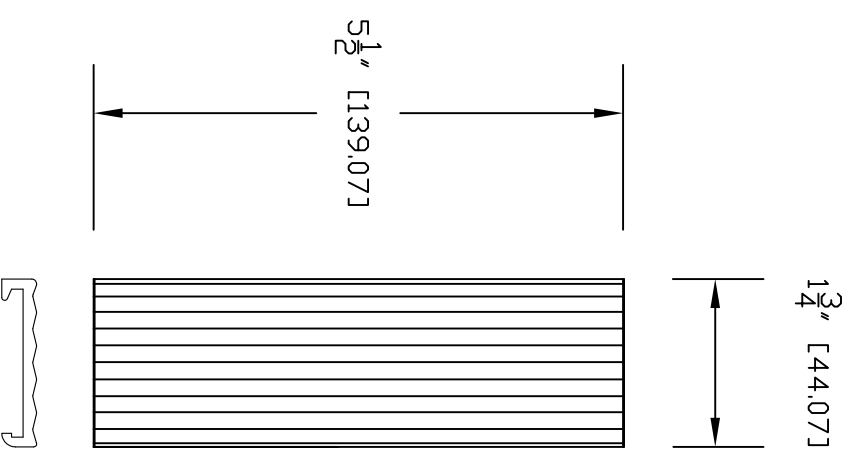


FRONT
VIEW
WITH
SCREW
COVER
CLIPS



REAR
VIEW
W/D
LENS

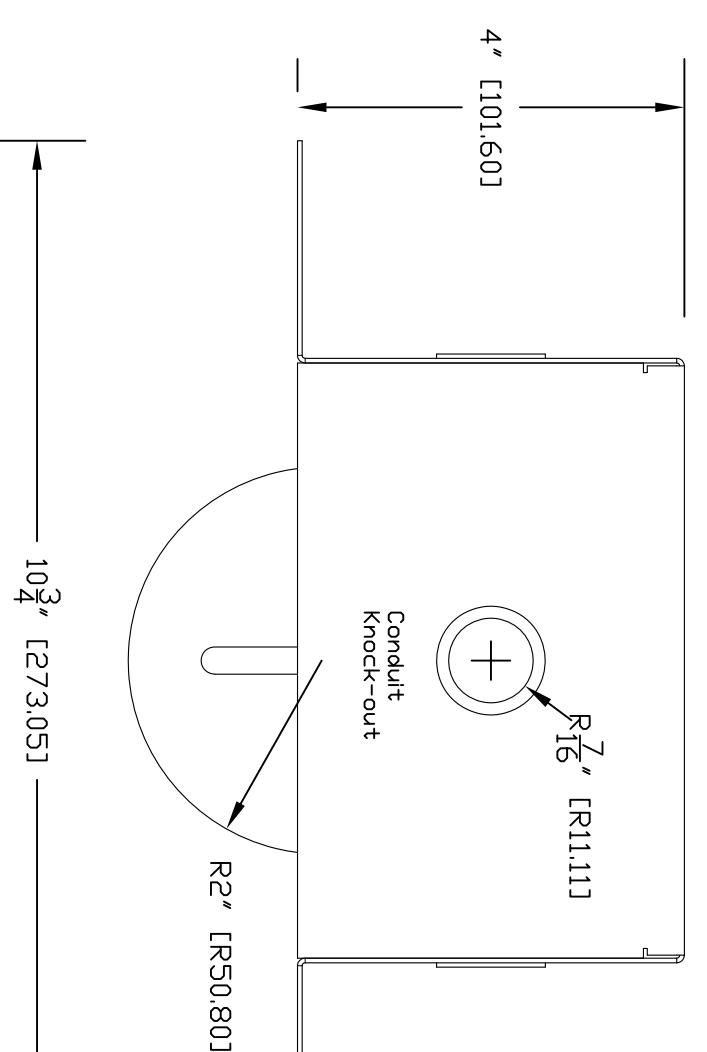
COVER CLIP
FRONT & END
VIEWS



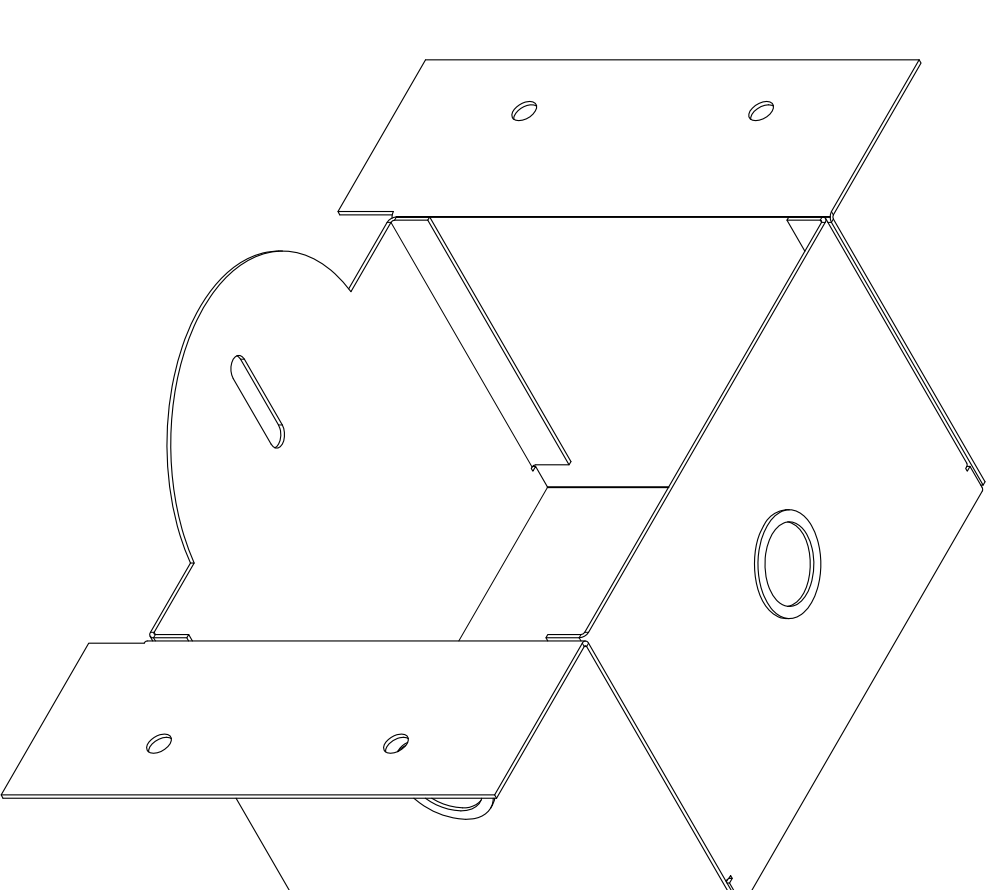
COVER
CLIP ISD

BACK CAN
ASSEMBLY

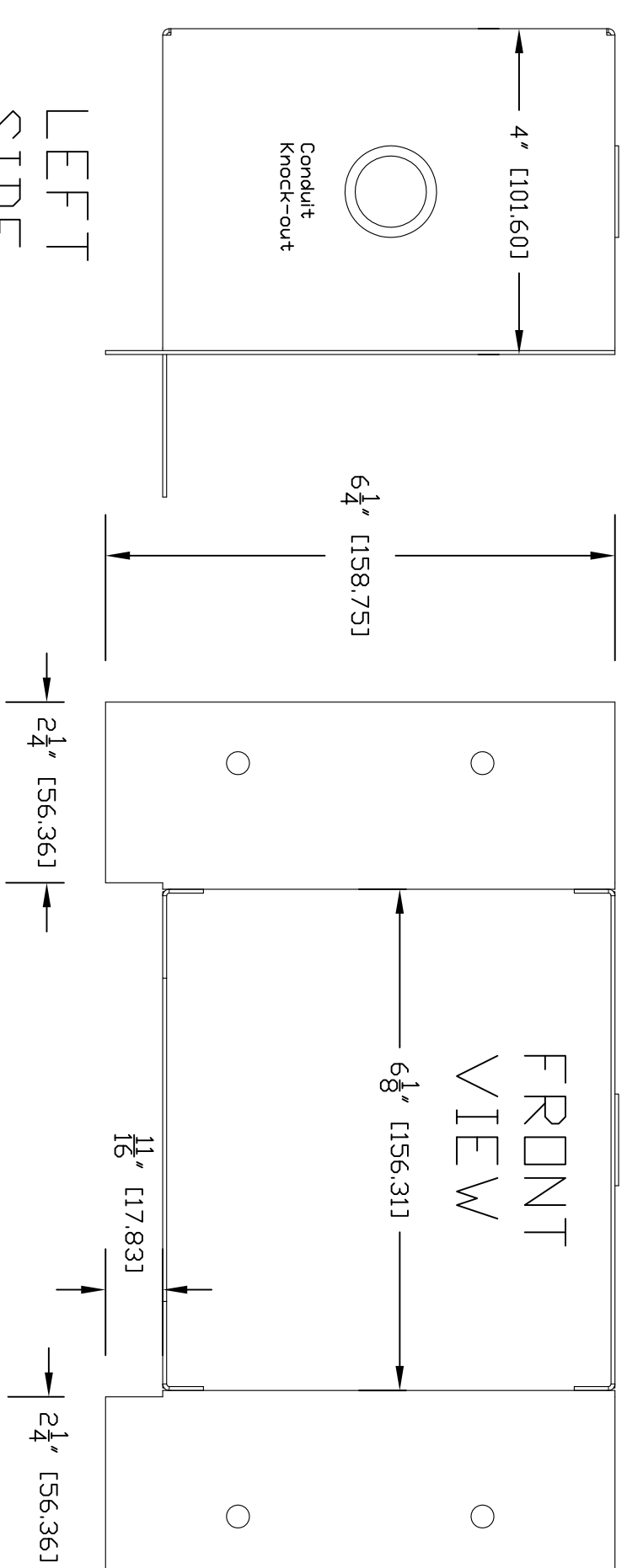
TOP
VIEW



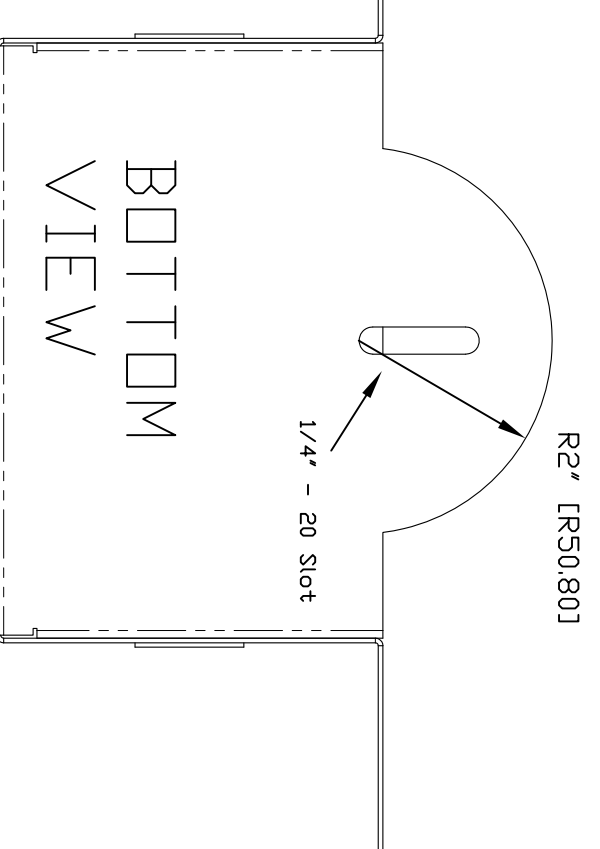
ISD
VIEW



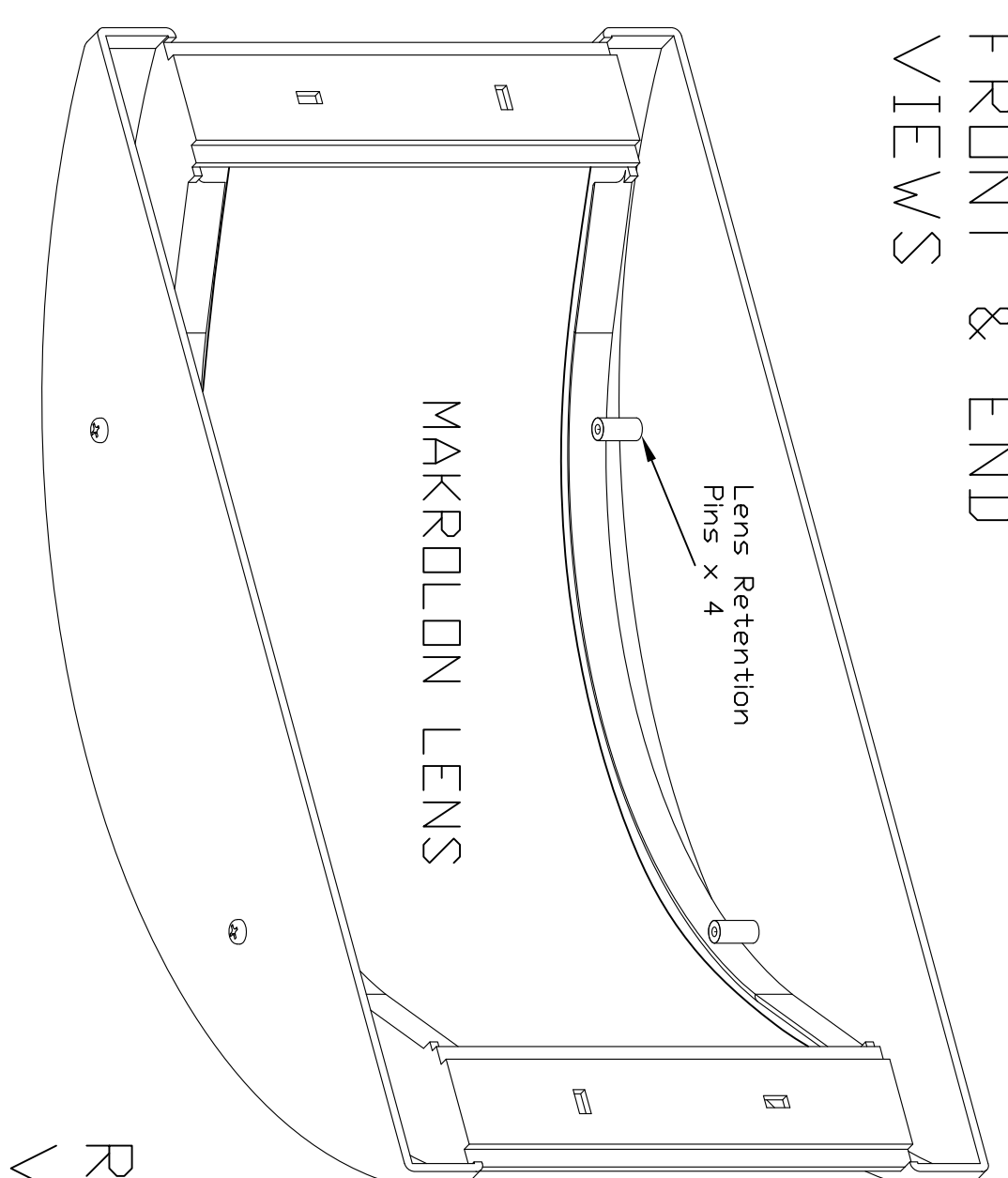
LEFT
SIDE
VIEW



FRONT
VIEW



BOTTOM
VIEW



REAR
VIEW ISD

vaddio

GENERAL NOTES
DIMENSIONS ARE IN INCHES (EQ) UNLESS OTHERWISE NOTED.
DO NOT DISTRIBUTE WITHOUT EXPRESS WRITTEN PERMISSION
FROM VADDIO. ALL RIGHTS RESERVED. VADDIO IS A REGISTERED
TRADEMARK OF VADDIO. ALL RIGHTS RESERVED. VADDIO IS A
REGISTERED TRADEMARK OF VADDIO. ALL RIGHTS RESERVED.
SPECIFICATIONS WITHOUT PRIOR NOTICE OR OBLIGATION.

Cover-View CAMERA ENCLOSURE

999-2224-000 FOR CANNON VC-C501 CAMERA or VADDIO W/VIEW 501
AVAILABLE IN BLACK ONLY

DRAWN: RAR/JM CHECKED: RAR APPROVED: RAR DATE: 04/11/2009

THIS DRAWING, INCLUDING ALL SUBJECT MATTERS INDICATED THEREON OR DERIVED THEREFROM,
COMPRISES PROPRIETARY INFORMATION AND IS THE EXPRESS PROPERTY OF VADDIO.
All Rights Reserved - Copyright 2008

MATERIALS: ABS PLASTIC, PAINTED

FINISH: BLACK COVER, GRAY COVER CLIPS

SCALE: 1:2 DRAWING NO.: 2224 REV: A

ANSI D

BLACK BACK BOX ASSEMBLY