



Configuration and Administration Guide for the

DocCAM 20 HDBT

Ceiling-Mounted Document Camera

Document 411-0017-32 Rev C
May 2018

Contents

Overview	1
What's in this Guide	1
Features	1
A Quick Look at the Camera	2
Features of Interest During Operation	3
Status Light	4
Using the IR Remote	5
IR Remote Cheat Sheet	5
IR Remote Details	6
Storing a Preset Using the Remote	6
Clearing a Preset Using the Remote	6
Web Interface	7
Getting the Camera's IP Address	7
Accessing the Web Interface	7
Browser Support	7
Administrative Access	8
Compact Menu View	8
Web Interface Cheat Sheet	9
System Administration	10
Configuring Network Settings	11
Specifying Time Zone and NTP Server	12
Managing Access and Passwords	13
Configuring IP Streaming	14
Editing IP Streaming Settings	14
Protocol and Streaming URL	16
Adding Room Information to the Web Interface	17
Rebooting the Camera	17
Saving (Exporting) or Restoring (Importing) a Configuration	18
Installing a Firmware Update	19
Contacting Vaddio Technical Support	20
Accessing the Diagnostic Logs	20
Configuring Camera Behavior	21
Setting Video Output Resolution	21
Enabling or Disabling the Laser Pointer	22
Software Switch Settings	23
Adjusting for the Lighting in the Room	24
Setting the Home Zoom Level and Other Zoom Presets	26
Operating the Camera from the Web Interface	28
Troubleshooting and Care	30
Check the Status Light First	30

Identify the Issue	30
Operation, Storage, and Care	31
Compliance Statements and Declarations of Conformity	32
FCC Part 15 Compliance	32
ICES-003 Compliance	33
European Compliance	33
Warranty Information	34
Index	35

Overview

This guide describes installation and related information for the DocCAM 20 HDBT ceiling-mounted document camera:

- Camera only, worldwide – 999-9968-000
- Camera with OneLINK HDMI camera extension, North America – 999-9968-200
- Camera with OneLINK HDMI camera extension, Europe/UK – 999-9968-201
- Camera with OneLINK Bridge A/V interface, North America – 999-9968-300
- Camera with OneLINK Bridge A/V interface, Europe/UK – 999-9968-301



What's in this Guide

This guide covers:

- Unpacking the camera
- Tips for a successful installation
- Information on mounting and connecting the camera
- Camera power-on

Complete product information is available in the **Integrator's Complete Guide to the DocCAM 20 HDBT Ceiling-Mounted Document Camera**.

Download manuals, dimensional drawings, and other information from www.vaddio.com/support.

Features

- Exmor® 1/2.8 type, high-speed, low-noise image sensor for 2.38 megapixels total, full HD (native 1080p/60)
- 20x optical zoom with horizontal field of view from 60° (wide end) to 3.3° (tele end)
- Low-power laser pointer for centering
- Superior low-light performance (0.4 Lux)
- Web interface for remote administration and operation, integration-ready Telnet and serial RS-232 control, presenter-friendly IR remote control
- Use with a OneLINK device for power, video, and control:
 - OneLINK HDMI – uncompressed HDMI video, bidirectional RS-232 connectivity for camera control via third-party equipment, passes IP stream from the camera
 - OneLINK Bridge – OneLINK HDMI capabilities plus uncompressed USB 3.0 streaming, HD-SDI output, and audio routed up to the camera and injected into the IP stream

Camera assembly numbers 998-9968-001 and 998-9968-100:

Class 1 Laser Product (IEC 60825-1:2014)

Produit Laser de la Classe 1 (IEC 60825-1:2014)

Klass 1 Laserprodukt (IEC 60825-1:2014)

Camera assembly number 998-9968-000 only:

This product contains a Class 3 laser.

A Quick Look at the Camera

The DocCAM 20 HDBT ceiling-mounted document camera is designed for recessed mounting. The features of interest during installation are not visible after the installation is complete.

Camera assembly numbers 998-9968-001 and 998-9968-100:

Class 1 Laser Product (IEC 60825-1:2014)

Produit Laser de la Classe 1 (IEC 60825-1:2014)

Klass 1 Laserprodukt (IEC 60825-1:2014)

Camera assembly numbers 998-9968-001 and 998-9968-100:

Note

This product contains a Class 1, 650 nm red laser pointer.

Cet appareil contient un pointeur laser de la Classe 1, à lumière rouge de 650 nm.

Camera assembly number 998-9968-000 only:

Caution

This product contains a Class 3 (5 mw) 650 nm red laser which produces visible laser radiation. Avoid direct eye exposure. Do not look at the laser aperture during camera operation.

All DocCAM 20 HDBT part numbers:

Caution | Avertissement

Laser light – Avoid direct eye exposure. Do not look at the laser aperture during camera operation.

Lumière de laser – Ne regardez pas directement dans le faisceau laser. Ne regardez pas directement dans l'ouverture laser lorsque la caméra est en marche.

Caution | Avertissement

Use of controls or adjustments or performance of procedures other than those specified herein may result in hazardous laser radiation exposure.

L'utilisation de commandes, réglages ou instructions autres que ceux spécifiés présente un risque d'exposition dangereuse aux radiations laser.

Features of Interest During Operation

In a typical installation, only the items inside the bezel ring are visible.

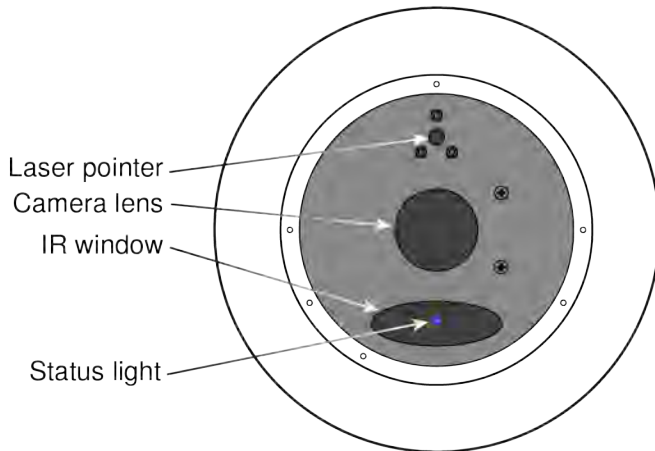
- **Camera lens** – 20x optical zoom lens for crisp detail.
- **Laser pointer** – Shows where the camera image is centered. Use the remote to turn on the laser pointer.

Caution | Avertissement

Laser light – Avoid direct eye exposure. Do not look at the laser aperture during camera operation.

Lumière de laser – Ne regardez pas directement dans le faisceau laser. Ne regardez pas directement dans l'ouverture laser lorsque la caméra est en marche.

- **IR window** – Sensors in the camera face receive signals from the remote. Point the remote toward the camera; precision is not necessary.
- **Status light** – The multicolored LED indicates the camera's current state.



Caution | Avertissement

Laser controls are available to remote operators using the web interface. Keep your eyes out of the beam path.

Les commandes laser sont disponibles aux opérateurs à distance utilisant l'interface Web. Gardez les yeux hors du trajet du faisceau.

Status Light

The light in the camera's face indicates its current state.

Note

By default, the camera's status light is active during normal operation; however, it can be configured to remain off when the camera is powered up. The camera may be sending video even if the indicator light is off.

- **Blue:** Normal operation (blinks off momentarily when the camera receives a command from the remote)
- **Purple:** In standby mode or booting
- **Yellow:** Firmware update in progress – overrides status light configuration

Camera assembly numbers 998-9968-001 and 998-9968-100:

Note

This product contains a Class 1, 650 nm red laser pointer.

Cet appareil contient un pointeur laser de la Classe 1, à lumière rouge de 650 nm.

Camera assembly number 998-9968-000 only:

Caution

This product contains a Class 3 (5 mw) 650 nm red laser which produces visible laser radiation. Avoid direct eye exposure. Do not look at the laser aperture during camera operation.

All DocCAM 20 HDBT part numbers:

Caution | Avertissement

Laser light – Avoid direct eye exposure. Do not look at the laser aperture during camera operation.

Lumière de laser – Ne regardez pas directement dans le faisceau laser. Ne regardez pas directement dans l'ouverture laser lorsque la caméra est en marche.

Using the IR Remote

The IR remote provides basic camera control for end users.

IR Remote Cheat Sheet

What do you need to do?	Button(s)
Power on or standby	Power (green button at top right)
Select the camera to control (if this remote controls more than one)	Camera Select buttons 1 through 3 (second row of buttons)
Discover the camera's IP address	Data Screen button (top left) – press and hold for 3 seconds.
Center the camera's subject	Laser buttons – The laser pointer is aligned at the factory to point slightly above the center of the camera's subject.
Move the camera to a zoom preset	Position Preset buttons 1 through 6 (bottom two rows)
Focus the camera	Auto Focus button (near arrow buttons) Manual Focus buttons Near and Far (below Zoom Speed buttons)
Control zoom speed	Zoom Speed buttons - Slow T and W , Fast T and W for telephoto and wide-angle modes (light gray)
Adjust for excess light behind the camera's subject	Back Light button (top center)

IR Remote Details

The Vaddio remote provides the following functions:

Power – Switch the selected camera on or off.

Power indicator – Lights momentarily when you press a button.

Back Light – Use or turn off Back Light Compensation.

Data Screen – Display the camera's IP address and MAC address. Press this button again to dismiss the display.

Camera Select – In multi-camera installations, selects the camera to be controlled. See [Camera Settings](#) for information on configuring the camera as camera 1, 2, or 3.

Home button – Returns the camera to its home zoom level.

Laser On – Toggles the laser pointer on and off.

Laser MOM – Turns on the laser pointer momentarily, and forbids it to go out with its friends if it doesn't turn off again after 5 seconds.

Camera assembly numbers 998-9968-001 and 998-9968-100:

Note

This product contains a Class 1, 650 nm red laser pointer.

Cet appareil contient un pointeur laser de la Classe 1, à lumière rouge de 650 nm.

Caution | Avertissement

Laser light – Avoid direct eye exposure. Do not look at the laser aperture during camera operation.

Lumière de laser – Ne regardez pas directement dans le faisceau laser. Ne regardez pas directement dans l'ouverture laser lorsque la caméra est en marche.

Auto Focus – Switch the camera to Auto-Focus mode.

Zoom Speed – Select Slow or Fast movements for telephoto and wide-angle shots.

- **T** (slow and fast) – Telephoto
- **W** (slow and fast) – Wide-angle

Manual Focus – Switch the camera to Manual Focus mode.

Near (-) adjustment – Moves the focus nearer when in manual focus mode.

Far (+) adjustment – Moves the focus farther when in manual focus mode.

Preset – Save the camera's current zoom level as one of the numbered presets.

Reset – Clear a saved preset.

Position Presets 1 through 6 – Move the camera to a predefined zoom level, or specify the preset to save or clear.

Storing a Preset Using the Remote

Zoom to the desired level. Then hold down the Preset button and press one of the numbered preset buttons.

Clearing a Preset Using the Remote

Press and hold the Reset button while pressing the preset number you want to clear.



Web Interface

The camera's web interface allows control via a network connection, using a browser. Password-protected pages provide administrative access to tasks such as setting passwords, changing the IP address, viewing diagnostics, and installing firmware updates. The user login (or guest access, if it is enabled) provides access to camera controls similar to those available from the IR remote.

You will need to know the camera's IP address to use the web interface. If the LAN has a DHCP server, the camera will get its IP address, gateway and routing information automatically and you will be able to browse to it. If not, you will need to configure the camera to use a static IP address.

Getting the Camera's IP Address

You will need to be able to view the camera's video output on an HDMI display.

1. Press the Data Screen button on the remote. The room display presents the camera's IP address and MAC address.
2. Press the Data Screen button again to dismiss the information.

If the address is 169.254.1.1, the camera is using its default IP address and you will need to configure it for your network. You can configure the camera's static IP address either through the network or from a computer connected directly to its Ethernet port. You may need a crossover cable.

Note

For static addressing, work with your IT department to determine the correct IP address, subnet mask, and gateway information.

Accessing the Web Interface

Enter the IP address or hostname in your browser's address bar. If you use the hostname, you may need to enter `http://` or `https://` as a prefix to keep the browser from treating it as a search query.

Browser Support

We have tested this product with these web browsers:

- Chrome®
- Microsoft® Internet Explorer®
- Safari®
- Firefox®

We test using the browser version available from the vendor at that time. Older versions of these browsers are likely to work, and other browsers may also work.

Administrative Access

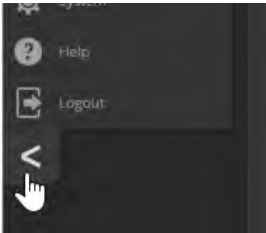
If you are on the Controls screen and no other screens are available, you're logged in at the user level, or guest access is enabled and you're not logged on at all. Use the Admin button to open the login screen.

When you log in as Admin, all the admin menu buttons appear on the left side of the screen. In addition to Camera Controls, you also have access to:

- Camera Settings – Additional control over camera behavior related to camera movement and color management.
- Streaming – Set up IP (H.264) streaming.
- Room Labels – Add helpful information the web interface screens, such as conference room name and the in-house number for AV assistance.
- Networking – Ethernet configuration.
- Security – Set passwords and manage guest access.
- Diagnostics – Access to logs for troubleshooting.
- System – Reboot, restore defaults, view switch settings, and run updates.
- Help – Tech support contact information.

Compact Menu View

By default, the navigation buttons in the administrative interface display an icon and a text label. You can also select the compact view of the menu buttons along with the standard view. The button at the bottom of the menu toggles between the two views.



Web Interface Cheat Sheet

Where to find the camera controls you need right now.

What do you need?	Go to this screen
Camera operation <ul style="list-style-type: none"> ■ Stop sending video (video mute) ■ Enter or exit standby mode 	(any page)
Camera operation <ul style="list-style-type: none"> ■ Zoom the camera ■ Set the speed for zoom motions ■ Focus the camera (Focus button reveals the focus control) ■ Zoom to a camera preset 	Camera
Camera behavior <ul style="list-style-type: none"> ■ Set or clear presets ■ Select the appropriate lighting adjustments (CCU Scenes section) 	Camera
Camera behavior <ul style="list-style-type: none"> ■ Define custom lighting adjustments (CCU scenes) ■ Specify whether to use automated adjustments (auto-iris, auto white balance, backlight compensation) 	Camera
Camera adjustments <ul style="list-style-type: none"> ■ Color settings (Iris, iris gain, red gain, blue gain, detail, chroma, gamma) ■ Store and label custom color settings as CCU scenes 	Camera
Access management <ul style="list-style-type: none"> ■ Guest access ■ Account passwords ■ Idle session time-out 	Security
IP streaming settings <ul style="list-style-type: none"> ■ Quality ■ Resolution ■ Frame rate ■ Streaming URL and path 	Streaming
IP settings <ul style="list-style-type: none"> ■ Hostname ■ DHCP or static addressing ■ Static: IP address, subnet mask, gateway 	Networking
Access to the camera's soft DIP switch settings	System
Time zone and NTP server (source for system time/date)	Networking
Diagnostic logs	Diagnostics
Information about the camera location	Room Labels
Helpdesk phone number for end users	Room Labels
Vaddio Technical Support contact information	Help

System Administration

Administrative tasks are on these pages of the web interface:

- Networking – Ethernet configuration.
- Security – Passwords, guest access, other IT security-related settings
- Room Labels – Helpful information to display in the web interface.
- System – Controls to reboot, reset to factory defaults, and run firmware updates, access to soft DIP switches.
- Help – Contact information for Vaddio Technical Support and a link to the documentation for this product.
- Diagnostics – Logs to help Vaddio Technical Support troubleshoot issues.

Configuring Network Settings

NETWORKING PAGE

Editable network settings include:

- The camera's hostname
- Choice of static IP addressing or DHCP addressing
- IP address, subnet mask, and gateway, if static IP addressing is used

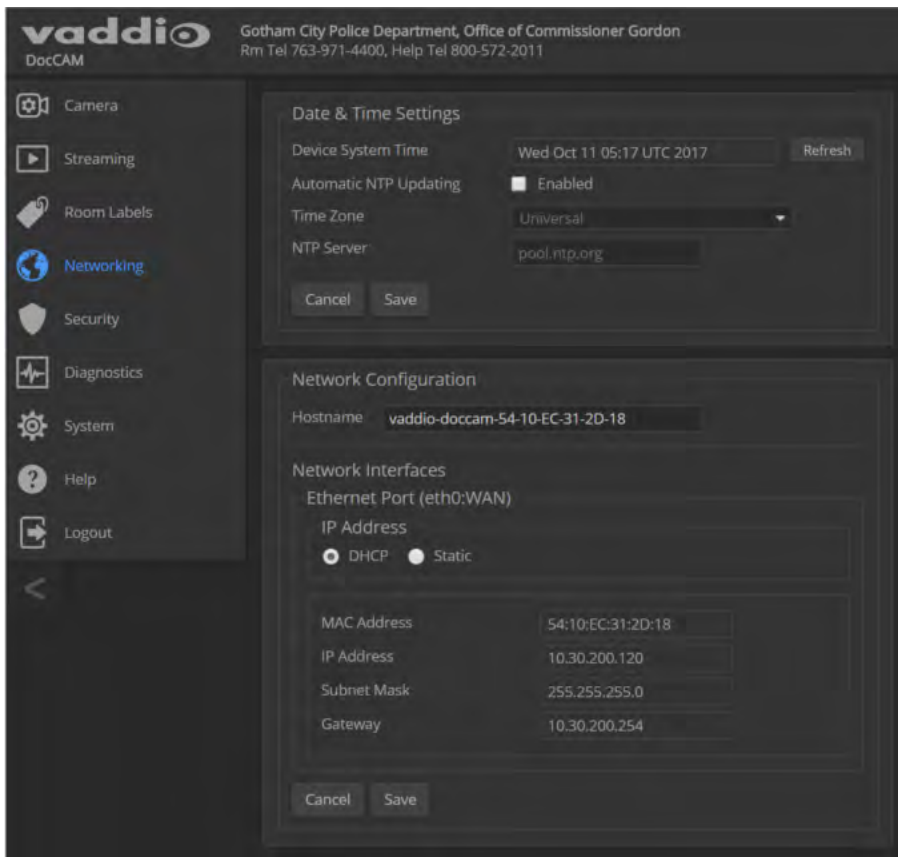
If your network supports hostname resolution, you may find it convenient to change the camera's hostname.

DHCP is the default setting, but the camera will use the default address of 169.254.1.1 if no DHCP server is available.

You will only be able to enter the IP address, subnet mask, and gateway if you set IP Address to Static.

Caution

Consult your IT department before changing any network settings. Errors in network configuration can make the camera and its IP stream inaccessible from the network. Do not change DHCP/Static addressing, IP address, subnet mask, or gateway unless you are very familiar with the characteristics and configuration of the network where you install the camera.



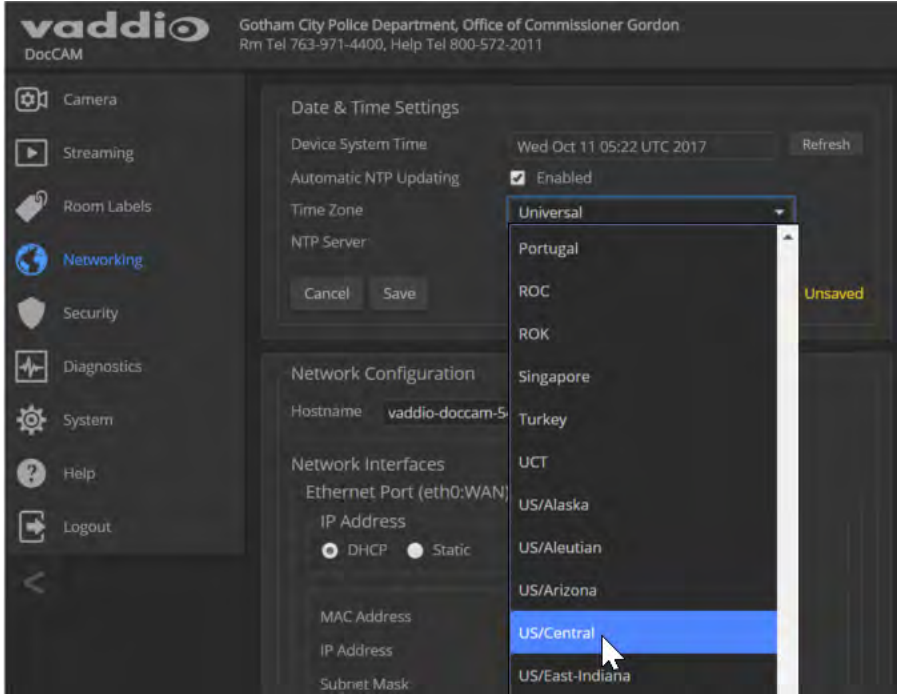
Specifying Time Zone and NTP Server

NETWORKING PAGE

Using automatic NTP updating ensures that the timestamps in the camera's diagnostic log are accurate. Specifying your time zone may make it easier to match logged events with other actions and external events.

1. To make the time zone and NTP server editable, enable Automatic NTP Updating.
2. Select the desired time zone from the list.
3. If desired, specify the NTP server to use. Otherwise, use the default.

You may need to refresh the system time display.



Managing Access and Passwords

SECURITY PAGE

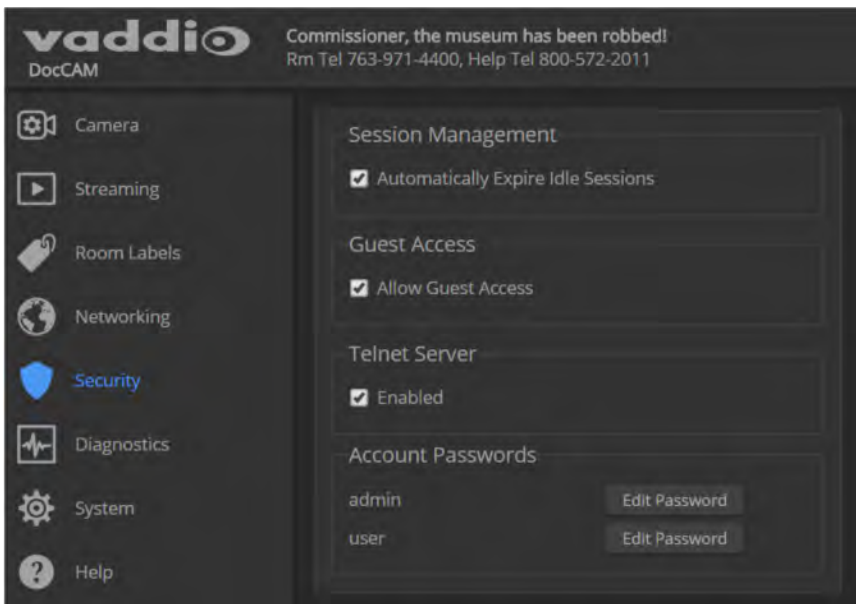
Things you can do on this page:

- Allow people to access the Camera screen without logging on (Allow Guest Access)
- Set whether inactive sessions log off automatically or not (Automatically Expire Idle Sessions)
- Change the password for the admin account
- Change the password for the user account
- Disable access via Telnet (by default, access via Telnet is enabled)

Some of these capabilities may be absent if the camera has not been updated with recent firmware.

Note

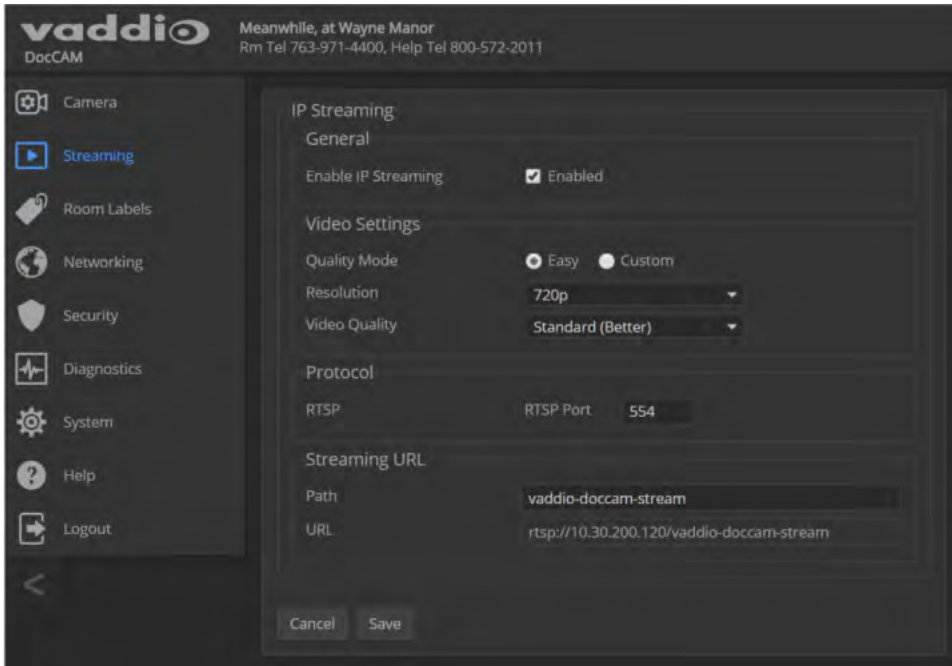
For best security, Vaddio strongly recommends changing the user and admin passwords from the default. Using the default passwords leaves the product vulnerable to tampering.



Configuring IP Streaming

STREAMING PAGE

IP streaming is enabled by default. Use the Enable IP Streaming checkbox to change this.



Editing IP Streaming Settings

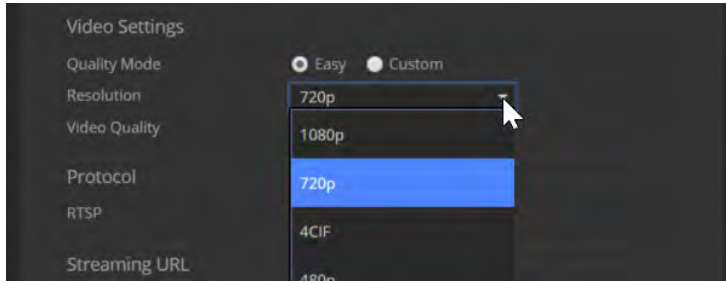
STREAMING PAGE

Note

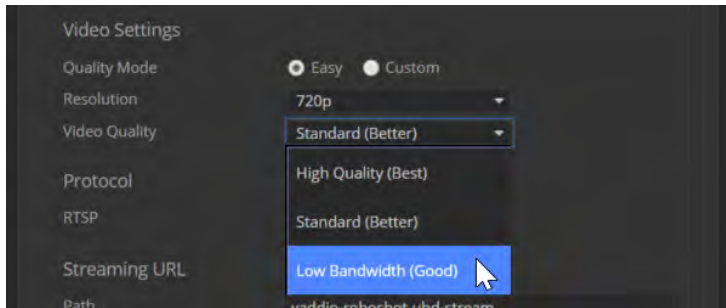
The IP streaming resolution cannot be higher than the value set with the video resolution switch on the back of the camera. (See [Video Resolution](#) for information on setting the switch.) If the selected value is out of range, the camera will automatically adjust the streaming resolution.

If you are not sure about these settings, start with the defaults.

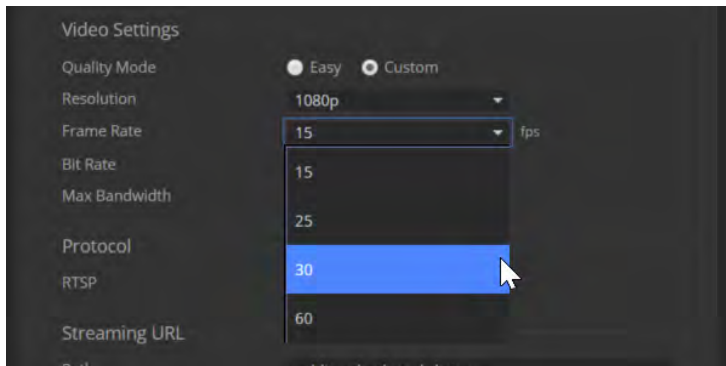
1. Select the Quality Mode: Easy or Custom. Easy mode configures most settings automatically.
2. Select the desired IP streaming resolution.



3. Easy quality mode only: Select Video Quality.

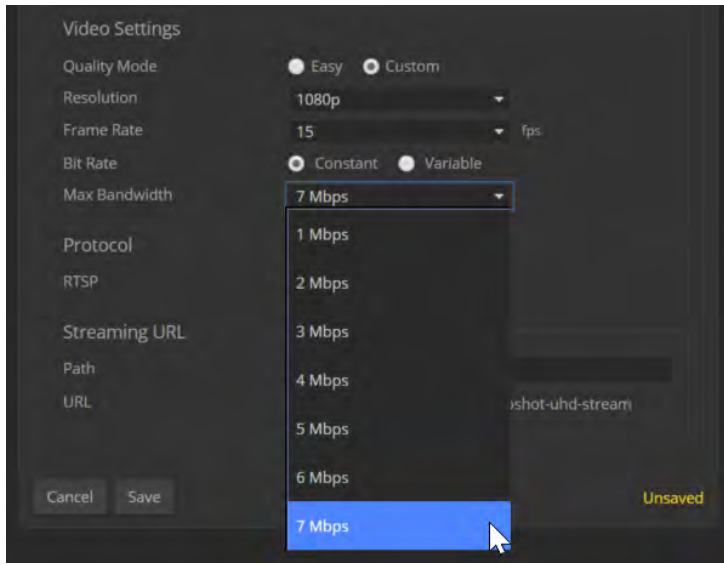


4. Custom quality mode only: Select the desired IP streaming frame rate.

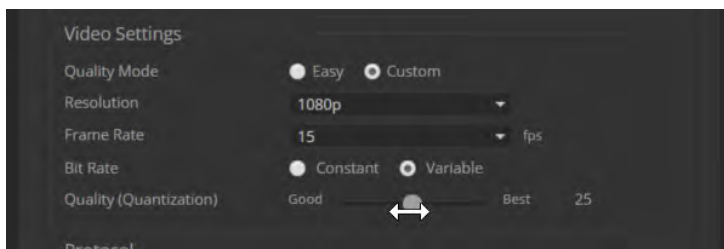


5. Custom quality mode only: Select Constant or Variable bit rate.

6. Custom quality mode, Constant bit rate only: Set Max Bandwidth.



7. Custom quality mode, Variable bit rate only: Set the Quality (Quantization) slider.



8. Save your changes.

Protocol and Streaming URL

STREAMING PAGE

The camera uses the RTSP protocol for H.264 streaming. Resolutions range from 1080p down to CIF; frame rates are 60/30/25/15.

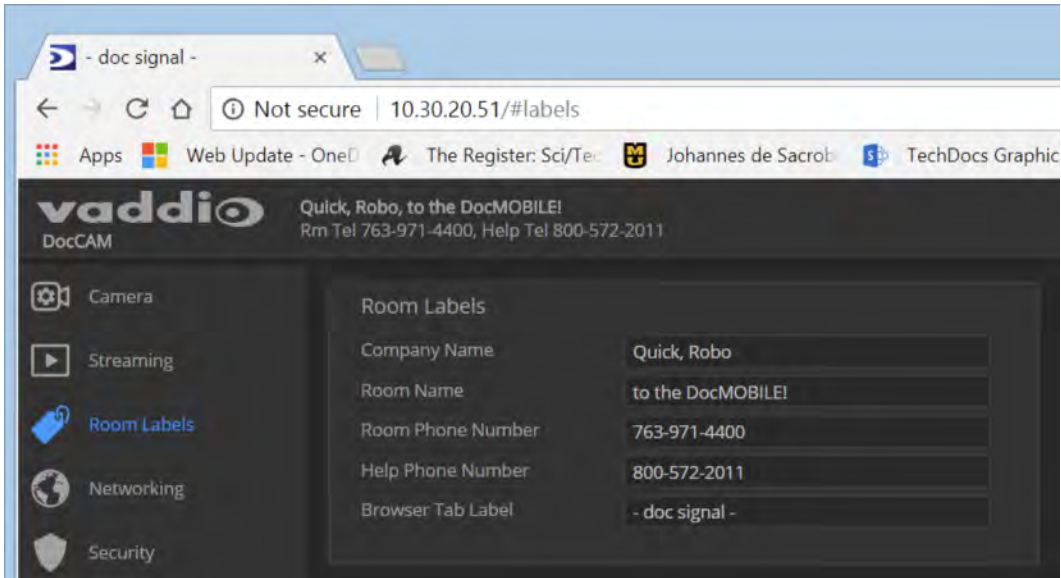
RTSP port: Vaddio strongly recommends using the default RTSP port number.

Streaming URL: If necessary, edit the path name to change the portion of the streaming URL that appears after the IP address.

Adding Room Information to the Web Interface

ROOM LABELS PAGE

The information you enter on this page is displayed on every page of the web interface.

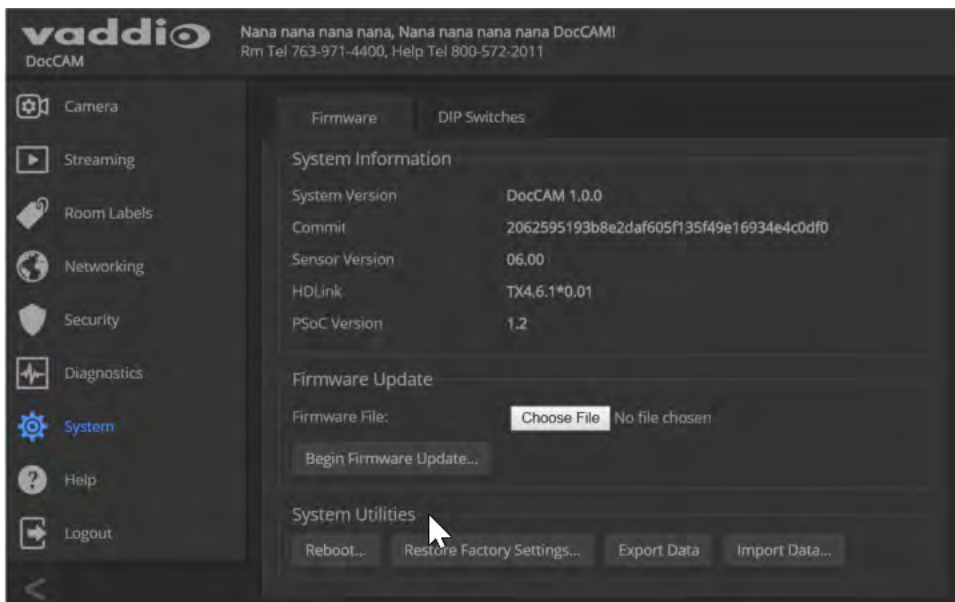


Rebooting the Camera

SYSTEM PAGE, FIRMWARE TAB

This can help if the camera stops responding as you expect.

In the System Utilities section, select Reboot.



Saving (Exporting) or Restoring (Importing) a Configuration

SYSTEM PAGE, FIRMWARE TAB

You can import a configuration to several cameras if you need to configure them the same way. Cameras must be of the same model, and must have a compatible firmware version installed.

Sensitive information such as hostname and passwords is not included in the configuration.

1. Configure the first camera.
2. Export its configuration (Export Data button). The export downloads to your computer as a `.dat` file. The filename is the camera's hostname.
3. Import the configuration to the other cameras (Import Data button in each camera's web interface).

Note

If the camera is using an older software version, it may be unable import a configuration that was exported from a camera using a different version of software.

Installing a Firmware Update

SYSTEM PAGE, FIRMWARE TAB

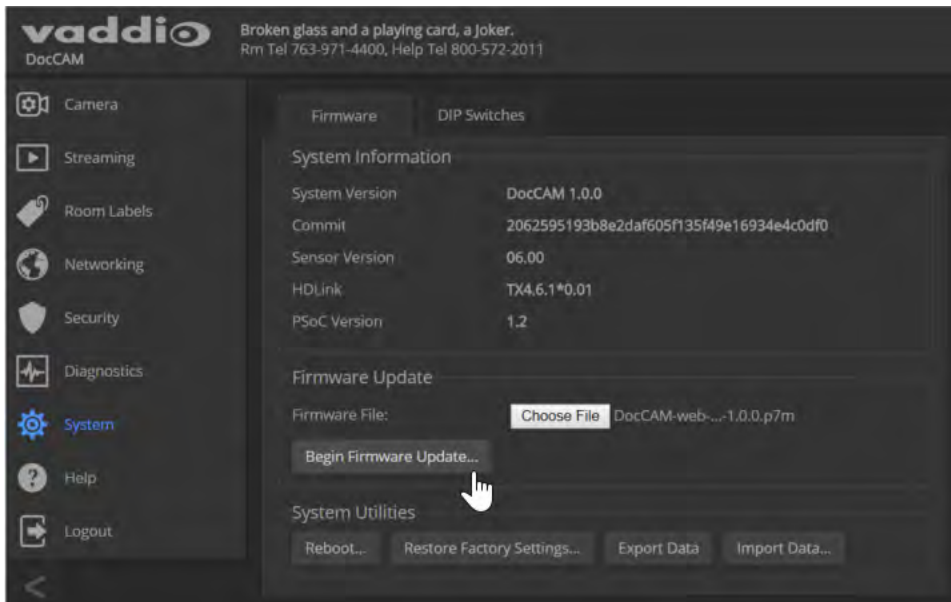
1. Locate and download the firmware and its release notes.
2. Select Choose File, then browse to the firmware that you downloaded and select it. The filename ends with .p7m.
3. Click Begin Firmware Update.
4. READ the information in the Confirm dialog box and be sure you understand it. It may seem boring, but it could save you some time and aggravation.
5. When you are ready to start the update, click Continue. A progress message box opens and the indicator light on the front of the camera turns yellow to show the firmware update is in progress. If the update process presents warnings or error messages, read them carefully.

The process may take a few minutes.

Caution

Ensure that the camera stays powered on and connected to the network during the update. Interrupting the update could make the camera unusable.

The camera reboots when the update is complete.

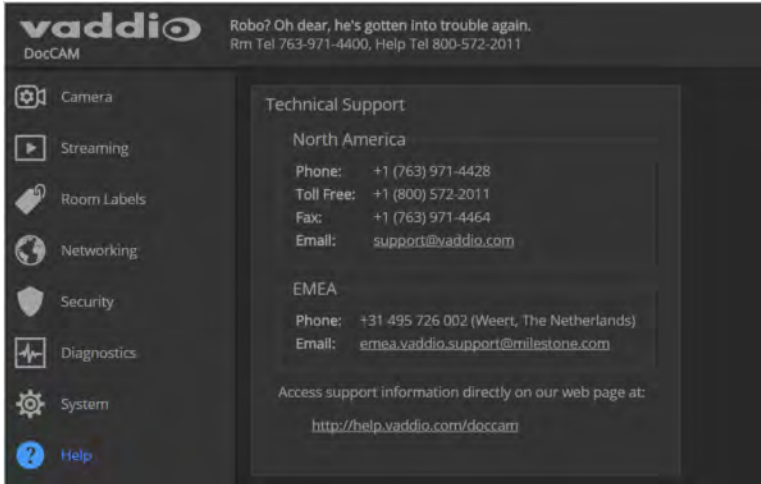


Contacting Vaddio Technical Support

HELP PAGE

If you can't resolve an issue using your troubleshooting skills (or the [Troubleshooting](#) table in this manual), we are here to help.

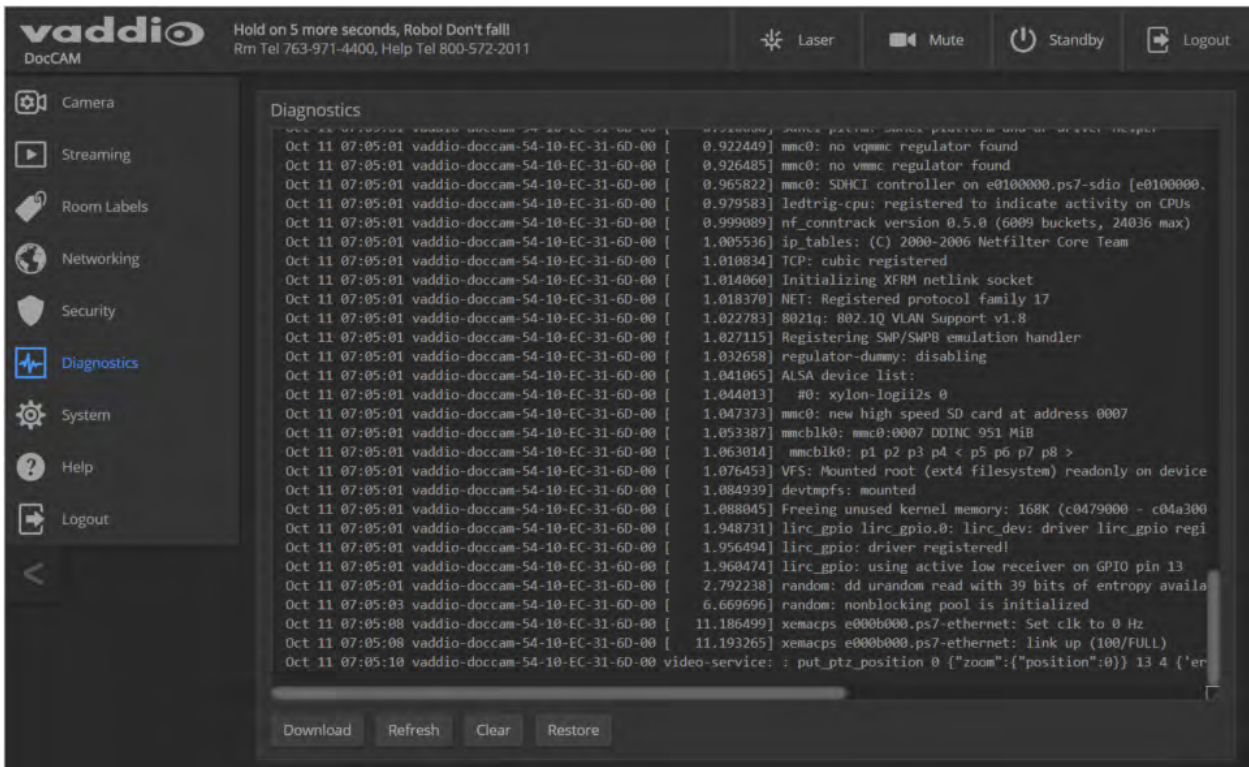
You'll find information for contacting Vaddio Technical Support on the Help page.



Accessing the Diagnostic Logs

DIAGNOSTICS PAGE

When you contact Vaddio technical support, your support representative may ask you to download and email the log file available from the Diagnostics page.



Configuring Camera Behavior

Basic camera configuration tasks are available on the Camera page:

- Storing the Home zoom level and other zoom presets
- Adjusting for the lighting in the room

Streaming settings are on the Streaming page. Other camera configuration tasks are on the DIP Switches tab of the System page. Settings include:

- Video resolution
- How the camera responds to the remote
- Enabling or disabling the laser pointer
- Status light behavior and color scheme
- Codec control mode (off/on)

Setting Video Output Resolution

SYSTEM PAGE, DIP SWITCHES TAB

The video output resolution set on the System page determines the resolution available on the video output (s) of the connected OneLINK device or HDBaseT-capable third-party equipment. It also determines the maximum resolution available for the IP stream.

To change the video output resolution:

Select the resolution and frame rate from the table. The arrow on the soft rotary switch points at the character corresponding to your selection.



Enabling or Disabling the Laser Pointer

SYSTEM PAGE, DIP SWITCHES TAB

By default, the laser pointer is enabled. To disable it, use the soft DIP switch for Laser Enabled/Laser Disabled.

Camera assembly numbers 998-9968-001 and 998-9968-100:

Note

This product contains a Class 1, 650 nm red laser pointer.

Cet appareil contient un pointeur laser de la Classe 1, à lumière rouge de 650 nm.

Camera assembly number 998-9968-000 only:

Caution

This product contains a Class 3 (5 mw) 650 nm red laser which produces visible laser radiation. Avoid direct eye exposure. Do not look at the laser aperture during camera operation.

All DocCAM 20 HDBT part numbers:

Caution | Avertissement

Laser light – Avoid direct eye exposure. Do not look at the laser aperture during camera operation.

Lumière de laser – Ne regardez pas directement dans le faisceau laser. Ne regardez pas directement dans l'ouverture laser lorsque la caméra est en marche.

Caution | Avertissement

Laser controls are available to remote operators using the web interface. Keep your eyes out of the beam path.

Les commandes laser sont disponibles aux opérateurs à distance utilisant l'interface Web. Gardez les yeux hors du trajet du faisceau.

Software Switch Settings

SYSTEM PAGE, DIP SWITCHES TAB

The DIP Switches tab of the System page provides access to these features:

Camera ID (IR Settings) – The IR Remote Commander can control up to three cameras in the same room with different IR frequencies. Use **IR Settings** switches 1 and 2 to select the frequency to identify the camera as camera 1, 2, or 3; then use the Camera Select buttons at the top of the remote to select the camera you want to control.

Switch 1 and switch 2 up: Camera 1

Switch 1 down, switch 2 up: Camera 2

Switch 1 and switch 2 down: Camera 3

IR On/IR Off – Enable/disable the camera's IR sensors. The camera does not respond to the IR remote if IR is off.

IR Out Off/On – Forwards IR when on.

Image Flip – If mounting the camera upside-down, set IMAGE FLIP ON.

Super Wide mode – Provides a wider horizontal field of view and greater zoom. Some distortion may be present.

Baud Rate – RS-232 serial communication rate (9600 bps or 38400 bps).

HDMI color – YCbCr (default) or sRGB.

LED color scheme – Color codes for UC (unified conferencing, the default setting) or Pro AV (broadcast). At this time, the two color schemes are functionally identical on this camera.

LED on/off – In most cases, Vaddio recommends leaving the status light on, to let people in the room know whether the camera is currently sending video.

Note

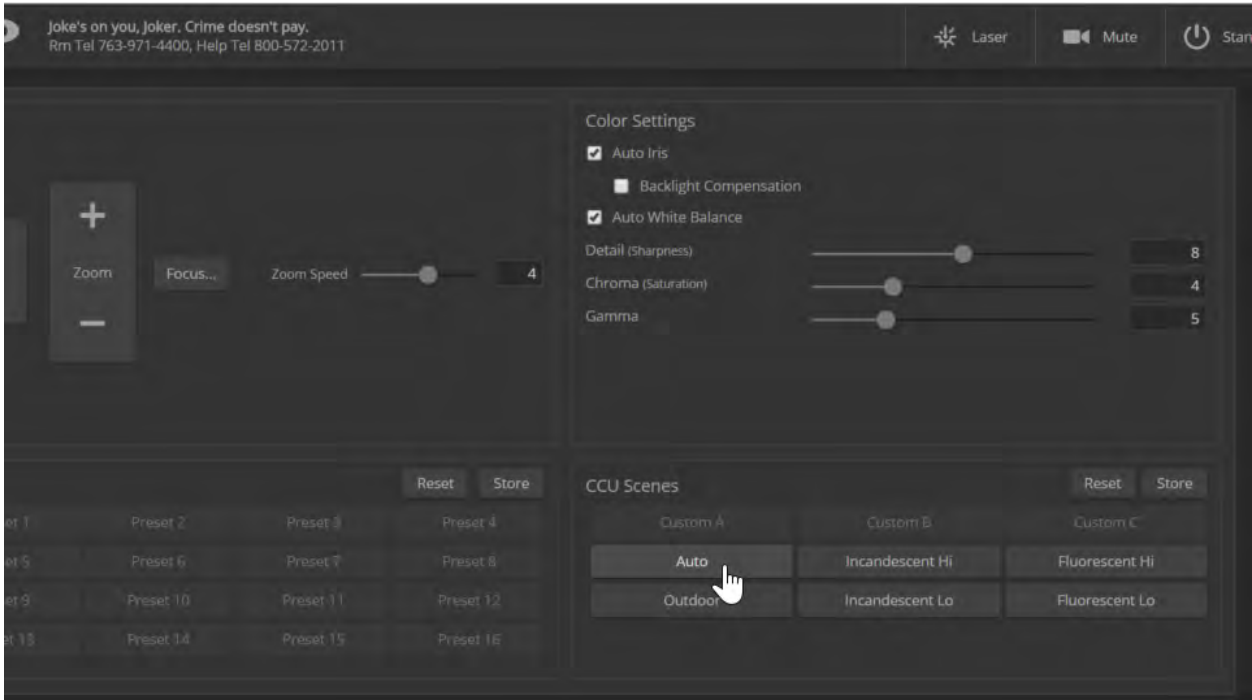
Vaddio recommends leaving the soft switches in their default positions unless you have verified that you need to change them.



Adjusting for the Lighting in the Room

CAMERA PAGE

The camera's default settings include the Auto CCU scene, Auto Iris, and Auto White balance, to allow the camera to do most of the lighting adjustments on its own. Our technical experts (specifically Scott) have pre-loaded some additional adjustments for common lighting scenarios as factory-defined CCU scenes – Incandescent Hi, Incandescent Lo, Fluorescent Hi, Fluorescent Lo, and Outdoor.



If the Auto settings don't yield the results you want, pick the CCU scene button with the label that best describes the lighting in the room. Then fine-tune the lighting and color adjustments as needed using the Color Settings:

- Auto Iris manages light level adjustments automatically. Clear this checkbox to adjust iris and gain manually.
- Auto White Balance manages color automatically. Clear this checkbox to adjust red gain and blue gain manually.
- If there is bright light behind the main subject of the shot, check the box for Back Light Compensation. This setting is only available if you are using Auto Iris.
- To adjust the intensity of the color, use the Chroma slider.
- To adjust the contrast between light and dark areas, use the Gamma slider.
- To adjust the image sharpness, use the Detail slider.

Note

If the video looks grainy or "noisy," try a lower Detail setting. As in conversation, too much detail is bad.

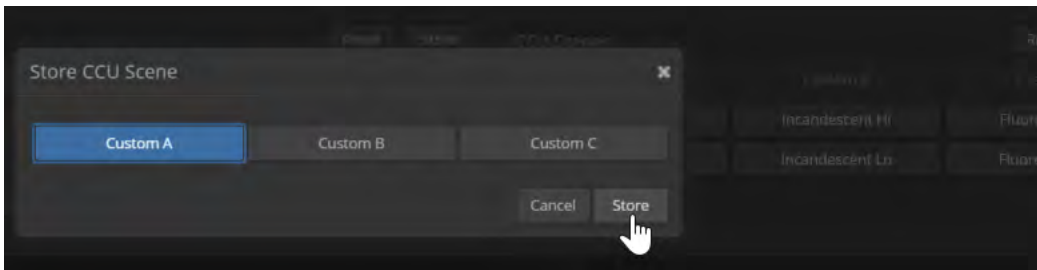
If you make a change that you don't like, you can clear all your changes by selecting a CCU scene. If you will want to use your color and lighting adjustments again (for example, after changing to a different zoom preset), save them as a custom CCU scene.

If you do not save your adjustments as a custom CCU scene, they will no longer be available after any action that accesses or affects color and lighting adjustments. These actions include:

- Rebooting the camera
- Putting the camera in standby mode
- Selecting a zoom preset that has color and lighting adjustments associated with it

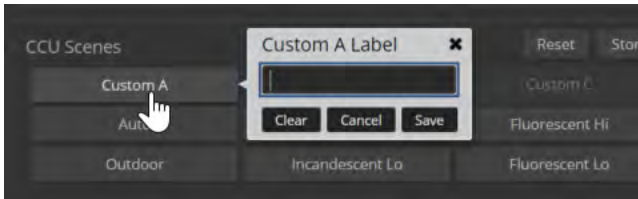
To save a custom CCU scene:

1. Adjust color and lighting. When the scene looks the way you want it to, click Store CCU Scene.
2. In the Store CCU Scene dialog box, select which custom scene to store (Custom A, B, or C).
3. Save your custom scene.



To rename a custom CCU scene:

Right-click a CCU scene label and make the change in the dialog box that opens.



Setting the Home Zoom Level and Other Zoom Presets

CAMERA PAGE

You can define a default zoom level – the Home preset. The camera returns to this level on powering up from standby or following a reboot. You can also define other zoom presets, for views that you will want to use repeatedly.

All zoom presets may include color and lighting information as well as zoom level.

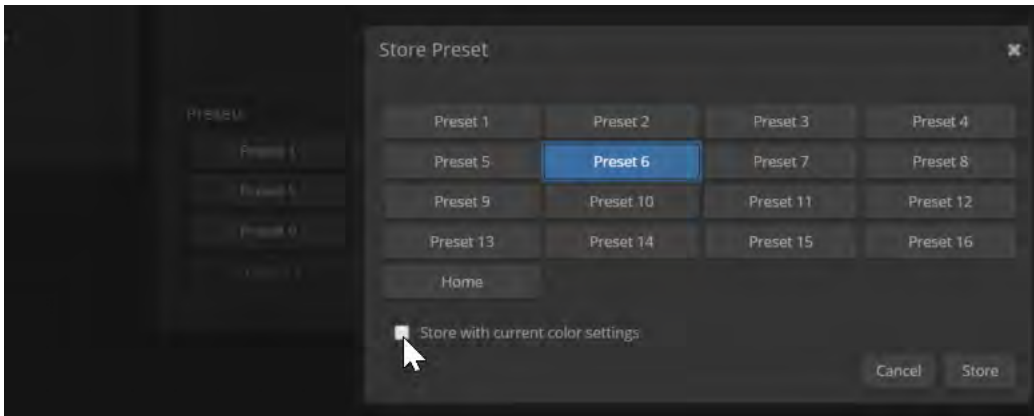
Note

The Store Preset dialog does not show which presets have already been defined. Storing a preset overwrites any information that was previously associated with that preset.



To set a zoom preset:

1. Set up the shot.
2. Optional: Adjust the color settings as needed.
3. Note which presets have not been defined.
4. In the Presets area, select Store.
5. Select the preset number that you want to store.
6. Optional: Check the "Store with current color settings" box. This is super-helpful if you adjusted the color settings in step 2.



To rename a zoom preset:

Right-click the preset and enter a name in the dialog box that opens.

To clear a zoom preset:

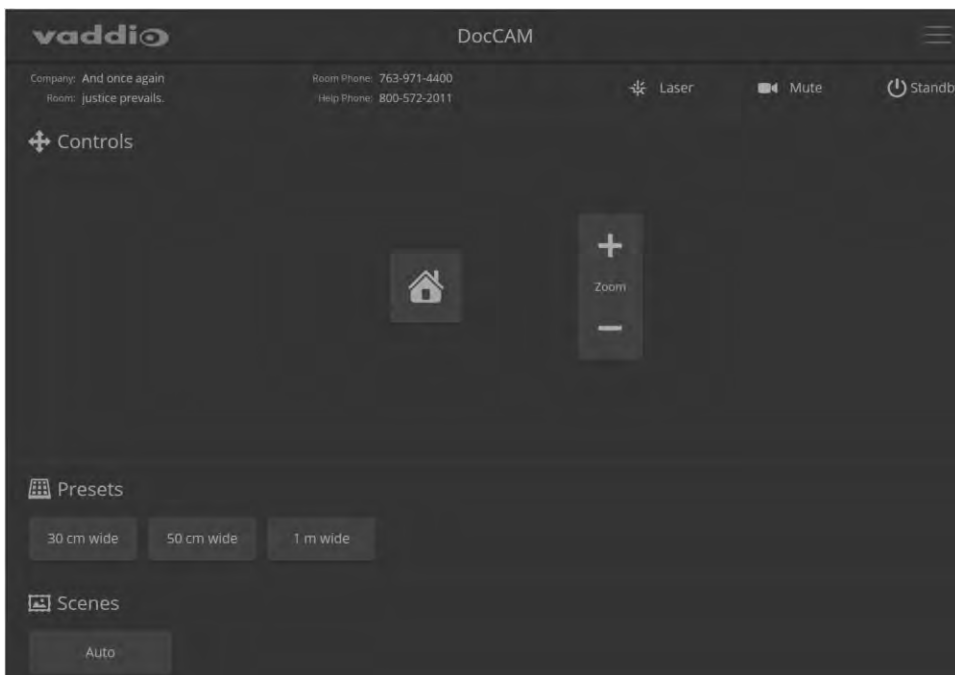
Storing a zoom preset automatically overwrites any information previously associated with that preset. To clear a preset without storing new information, select Reset in the Presets area. Then select the preset to be cleared, and select Reset in the Reset Presets dialog box.

Operating the Camera from the Web Interface

Operator controls include:

- Home and other zoom presets – If defined, Home returns the camera to its default zoom level. Other zoom levels may also be available as presets. All presets, including Home, may include lighting and color adjustments.
- Manual zoom – Zoom in (+) or zoom out (-) using the Zoom buttons.
- Scenes – If defined, color and lighting adjustments are available as scenes.
- Laser – Turn on or turn off the laser pointer, if this is enabled.
- Video Mute – Stop or resume sending video.
- Standby – Put the camera in a low-power state.

The system administrator may choose to disable the laser pointer. See [Enabling or Disabling the Laser Pointer](#).



Caution | Avertissement

Laser controls are available to remote operators using the web interface. Keep your eyes out of the beam path.

Les commandes laser sont disponibles aux opérateurs à distance utilisant l'interface Web. Gardez les yeux hors du trajet du faisceau.

Camera assembly numbers 998-9968-001 and 998-9968-100:

Class 1 Laser Product (IEC 60825-1:2014)

Produit Laser de la Classe 1 (IEC 60825-1:2014)

Klass 1 Laserprodukt (IEC 60825-1:2014)

Camera assembly numbers 998-9968-001 and 998-9968-100:

Note

This product contains a Class 1, 650 nm red laser pointer.

Cet appareil contient un pointeur laser de la Classe 1, à lumière rouge de 650 nm.

Camera assembly number 998-9968-000 only:

Caution

This product contains a Class 3 (5 mw) 650 nm red laser which produces visible laser radiation. Avoid direct eye exposure. Do not look at the laser aperture during camera operation.

All DocCAM 20 HDBT part numbers:

Caution | Avertissement

Laser light – Avoid direct eye exposure. Do not look at the laser aperture during camera operation.

Lumière de laser – Ne regardez pas directement dans le faisceau laser. Ne regardez pas directement dans l'ouverture laser lorsque la caméra est en marche.

Troubleshooting and Care


Stuff happens – we get it. Use this information to determine whether it's time to call Vaddio Technical Support.

Check the Status Light First

When the camera doesn't behave as you expect, check the indicator light before you do anything else.

- **Blue:** Normal operation (blinks once when the camera receives a command from the remote)
- **Purple:** In standby mode or booting
- **Yellow:** Firmware update in progress
- **Red:** On-air tally

Identify the Issue

What is it doing?	Possible causes	Check and correct
<p>Nothing. The status light is off, there is no video, and the camera does not respond to the remote.</p> 	The camera is not receiving power.	Is the camera's power source (OneLINK device or PoE+ injector) receiving power? Is the camera's cable connected to the power source? If both are true, either the camera cable or the camera is bad.
	The camera's status light is turned off and the camera is in standby mode.	Point the remote toward the camera and press the Power button.
	The camera's status light is turned off and the remote is not using the same IR channel as the camera.	Push the Camera Select 1 button on the remote. Try the other Camera Select buttons if necessary.
	The camera's status light is off and the camera is confused.	Reboot or power-cycle the camera.
The camera never finishes initializing and the light is purple.	The camera is not receiving enough power. Is a PoE power injector connected?	Use PoE+ instead. PoE does not deliver enough power.
The camera does not respond to the remote and the light is yellow.	A firmware update is in progress.	Wait a few minutes, and try again when the light turns blue.
The camera does not respond to the remote, but the web interface is available	The remote and the camera are not using the same IR channel.	Press the Camera Select 1 button on the remote. Try the other Camera Select buttons if necessary.
	IR is switched off (Soft DIP switch 3 down)	Turn IR on (System page, DIP Switches tab). See Other Switch Settings for more information.
	The remote's batteries are dead.	Put new batteries in the remote.

What is it doing?	Possible causes	Check and correct
The camera responds to the remote but the web interface is not available.	The camera is not using the IP address you browsed to.	Press the Data Screen button on the remote to see camera information.
The camera's web UI is available but the camera does not respond to commands sent via RS-232 connection to the OneLINK device.	The RS-232 cable to the OneLINK device is not connected, or is bad.	Connect a known good cable.
	The camera's baud rate setting doesn't match the settings on the controlling device.	Check the baud rate setting at both ends to be sure they match. The camera's baud rate setting is available on the System page in the web UI.
No H.264 video stream.	Streaming is not enabled.	Enable streaming: Streaming page in the web interface.
The laser pointer is off-center in the image area.	The laser pointer is out of alignment.	Contact Vaddio Technical Support.

Operation, Storage, and Care

For smears or smudges on the product, wipe with a clean, soft cloth. Use a lens cleaner on the lens. Do not use any abrasive chemicals.

Keep this device away from food and liquids.

Do not operate or store the device under any of the following conditions:

- Temperatures above 40°C (104°F) or below 0°C (32°F)
- High humidity, condensing or wet environments
- Inclement weather
- Severe vibration
- Lunar environments not pressurized and climate-controlled to Earth-normal
- Dry environments with an excess of static discharge

Do not attempt to take this product apart. There are no user-serviceable components inside.

Compliance Statements and Declarations of Conformity

Camera assembly numbers 998-9968-001 and 998-9968-100:

Camera assembly numbers 998-9968-001 and 998-9968-100:

Class 1 Laser Product (IEC 60825-1:2014)

Produit Laser de la Classe 1 (IEC 60825-1:2014)

Klass 1 Laserprodukt (IEC 60825-1:2014)

Camera assembly number 998-9968-000 only:

This product contains a Class 3 laser.

All camera assemblies

Compliance testing was performed to the following regulations:

FCC Part 15 (15.107, 15.109), Subpart B	Class A
ICES-003, Issue 54: 2012	Class A
EMC Directive 2014/30/EU	Class A
EN 55032: 2015	Class A
EN 55024: November 2010	Class A
KN24 2008 (CISPR 24: 1997 + A1: 2000 + A2: 2002)	Class A

Camera assembly numbers 998-9968-001 and 998-9968-100:

IEC 60950-1:2005 (2nd Edition); Am 1: 2009 + Am 2: 2013	Safety
EN 60950-1: 2006 + A11: 2009 + A1: 2010 + A12: 2011 + A2: 2013	Safety
IEC 60825-1: 2014 (3rd Edition)	Safety

FCC Part 15 Compliance

This equipment has been tested and found to comply with the limits for a Class A digital device, pursuant to Part 15, Subpart B, of the FCC Rules. These limits are designed to provide reasonable protection against harmful interference when the equipment is operated in a commercial environment. This equipment generates, uses, and can radiate radio frequency energy and, if not installed and used in accordance with the instruction manual, may cause harmful interference to radio communications. Operation of this equipment in a residential area is likely to cause harmful interference in which case the user will be required to correct the interference at his/her own expense.

Operation is subject to the following two conditions: (1) This device may not cause interference, and (2) This device must accept any interference including interference that may cause undesired operation of the device.

Changes or modifications not expressly approved by Vaddio can affect emission compliance and could void the user's authority to operate this equipment.



ICES-003 Compliance

This digital apparatus does not exceed the Class A limits for radio noise emissions from digital apparatus set out in the Radio Interference Regulations of the Canadian Department of Communications.

Le présent appareil numérique n'émet pas de bruits radioélectriques dépassant les limites applicables aux appareils numériques de la classe A prescrites dans le Règlement sur le brouillage radioélectrique édicté par le ministère des Communications du Canada.



European Compliance

This product has been evaluated for Electromagnetic Compatibility under the EMC Directive for Emissions and Immunity and meets the requirements for a Class A digital device. In a domestic environment this product may cause radio interference in which case the user may be required to take adequate measures.

Standard(s) To Which Conformity Is Declared:



EMC Directive 2014/30/EU

EN 55032: 2015

Conducted and Radiated Emissions

EN 55024: November 2010

Immunity

EN 61000-4-2: 1995 + Amendments A1: 1998 + A2: 2001

Electrostatic Discharge

EN 61000-4-3: 2006 + A1: 2008

Radiated Immunity

EN 61000-4-4: 2004 + Corrigendum 2006

Electrical Fast Transients

EN 61000-4-5: 2006

Surge Immunity

EN 61000-4-6: 2009

Conducted Immunity

EN 61000-4-8: 2010

Power Frequency Magnetic Field

EN 61000-4-11: 2004

Voltage Dips, Interrupts and Fluctuations

KN24 2008 (CISPR 24: 1997 + A1: 2000 + A2: 2002)

IT Immunity Characteristics

EN 61000-4-2

Electrostatic Discharge

EN 61000-4-3

Radiated Immunity

EN 61000-4-4

Electrical Fast Transients

EN 61000-4-5

Surge Immunity

EN 61000-4-6

Conducted Immunity

EN 61000-4-8

Power Frequency Magnetic Field

EN 61000-4-11

Voltage Dips, Interrupts and Fluctuations

Camera assembly numbers 998-9968-001 and 998-9968-100:
IEC 60950-1: 2005 (2nd Edition); Am 1: 2009 + Am 2: 2013

Safety

Camera assembly numbers 998-9968-001 and 998-9968-100:
EN 60950-1: 2006 + A11: 2009 + A1: 2010 + A12: 2011 + A2:
2013

Safety

Camera assembly numbers 998-9968-001 and 998-9968-100:
IEC 60825-1: 2014 (3rd Edition)

Safety

Camera assembly number 998-9968-000 only: This product has not been evaluated for compliance with CE safety requirements.

Warranty Information

See Vaddio Warranty, Service and Return Policies posted on support.vaddio.com for complete details.

Hardware* warranty: Two (2) year limited warranty on all parts and labor for Vaddio manufactured products. Vaddio warrants its manufactured products against defects in materials and workmanship for a period of two years from the day of purchase, to the original purchaser, if Vaddio receives notice of such defects during the warranty. Vaddio, at its option, will repair or replace products that prove to be defective. Vaddio manufactures its hardware products from parts and components that are new or equivalent to new in accordance with industry standard practices.

Exclusions: The above warranty shall not apply to defects resulting from improper or inadequate maintenance by the customer, customers applied software or interfacing, unauthorized modifications or misuse, mishandling, operation outside the normal environmental specifications for the product, use of the incorrect power supply, modified power supply or improper site operation and maintenance. OEM and special order products manufactured by other companies are excluded and are covered by the manufacturer's warranty.

Vaddio Customer Service: Vaddio will test, repair, or replace the product or products without charge if the unit is under warranty. If the product is out of warranty, Vaddio will test then repair the product or products. The cost of parts and labor charge will be estimated by a technician and confirmed by the customer prior to repair. All components must be returned for testing as a complete unit. Vaddio will not accept responsibility for shipment after it has left the premises.

Vaddio Technical Support: Vaddio technicians will determine and discuss with the customer the criteria for repair costs and/or replacement. Vaddio Technical Support can be contacted by email at support@vaddio.com or by phone at one of the phone numbers listed on support.vaddio.com.

Return Material Authorization (RMA) number: Before returning a product for repair or replacement request an RMA from Vaddio's technical support. Provide the technician with a return phone number, e-mail address, shipping address, product serial numbers and original purchase order number. Describe the reason for repairs or returns as well as the date of purchase. See the General RMA Terms and Procedures section for more information. RMAs are valid for 30 days and will be issued to Vaddio dealers only. End users must return products through Vaddio dealers. Include the assigned RMA number in all correspondence with Vaddio. Write the assigned RMA number clearly on the shipping label of the box when returning the product. All products returned for credit are subject to a restocking charge without exception. Special order product are not returnable.

Voided warranty: The warranty does not apply if the original serial number has been removed or if the product has been disassembled or damaged through misuse, accident, modifications, use of incorrect power supply, use of a modified power supply or unauthorized repair.

Shipping and handling: Vaddio will not pay for inbound shipping transportation or insurance charges or accept any responsibility for laws and ordinances from inbound transit. Vaddio will pay for outbound shipping, transportation, and insurance charges for all items under warranty but will not assume responsibility for loss and/or damage by the outbound freight carrier. If the return shipment appears damaged, retain the original boxes and packing material for inspection by the carrier. Contact your carrier immediately.

Products not under warranty: Payment arrangements are required before outbound shipment for all out of warranty products.

Index

A

- admin login 13
 - changing 13
- anatomy of the camera 2-3
- auto iris 24
- auto white balance 24
- automatic NTP updating 12

B

- backing up a configuration 18
- backlight compensation 24
- behavior on power-up 26
- bit rate, constant or variable (IP streaming setting) 14
- blue gain 24
- browser compatibility 7

C

- camera ID setting (DIP switch) 23
- camera select 5-6, See also camera ID setting (DIP switch)
- capabilities 1
- CCU scenes 26
- cheat sheet 5, 9
 - Vaddio IR Remote Commander 5
 - web interface 9
- chroma setting 24
- cleaning 31
- color settings 24
- colors of the status light 4, 30
- compatibility, browsers 7
- configuration, saving or restoring 18
- connector identification 2
- constant bit rate (IP streaming setting) 14
- custom CCU scenes 24
- custom home position, setting 26

D

- default IP address 7
- detail setting 24
- DHCP 11
- diagnostic logs 20
- Diagnostics page (web) 20
- DIP switch settings 23
- directional controls 5-6

F

- fault isolation 30
- firmware update 19
- firmware version 19
- focus 5-6

G

- gain 24
 - blue 24
 - red 24
- getting help 20
- guest access 13
 - allowing 13

H

- Help page (web) 20
- home position 26
 - custom 26
- hostname 11

I

- importing a configuration 18
- inactive sessions (web interface) 13
- indicator light 3-4, 23, 30
 - color scheme 23
 - enable/disable (soft DIP switch) 23
 - location 3
- information, conference room 17
- IP address 5-7, 11
 - default 7, 11
- IP streaming 14, 16, 21
 - enabling or disabling 14
 - maximum resolution available 21
 - quality 14
 - resolutions and frame rates 14
 - settings 14, 16
- IR on/off (soft DIP switch) 23
- IR remote 5-6
- iris settings 24

L

- labels, room 17
- laser pointer 3, 23
 - enable/disable (soft DIP switch) 23
 - location 3
- lighting settings 24
- log files 20

M

manual focus 5-6
maximum IP streaming resolution 21

N

navigation buttons, hiding/showing 8
network configuration 7, 11
 default 11
Networking page (web) 11
NTP server 12

O

OneLINK 30
operating environment 31

P

page 11, 13-14, 17, 19-21
 Diagnostics 20
 Help 20
 Networking 11
 Room Labels 17
 Security 13
 Streaming 14
 System 17, 19, 21
pan/tilt/zoom 5-6
passwords 13
power 5-6
 on and off 5-6
power-up settings 26
presets 5-6
 clearing 6
 setting 6
product capabilities 1
product returns and repairs 34

Q

quantization (IP streaming setting) 14
quick reference 5, 9
 Vaddio IR Remote Commander 5
 web interface 9

R

rebooting the camera 17
red gain 24
remote control 5-6
resolution 14, 21
 IP streaming 14
 switch setting 21

restoring a configuration 18
room information 17
Room Labels page (web) 17
rotary switch, soft (resolution/frame rate) 21

S

safety requirements 2, 4
saving a configuration 18
scenes, CCU 24
 storing 24
Scott 24
Security page (web) 13
session time-out 13
soft DIP switches 23
soft rotary switch (resolution/frame rate) 21
solving problems 30
start-up behavior, setting 26
static IP address 11
status light, meanings of colors 4, 30
storage environment 31
storing a configuration 18
streaming 14
 enabling or disabling 14
 quality 14
 settings 14
Streaming page (web) 14
supported web browsers 7
switch settings 19, 23
 reading from web interface 19
System page (web) 17, 19, 21
system time 12

T

technical support 20
temperature, operating and storage 31
time zone 12
troubleshooting 30

U

update 19
user login 13
 changing 13

V

Vaddio IR Remote Commander 5
variable bit rate (IP streaming setting) 14
video resolution setting 21

W

warranty 34

web browsers supported 7

web interface 8, 11, 13-14, 17, 19-21

 Diagnostics page 20

 Help page 20

 navigation button labels 8

 Networking page 11

 Room Labels page 17

 Security page 13

 Streaming page 14

 System page 17, 19, 21

Z

zoom speed 5-6

Vaddio is a brand of Milestone AV Technologies · www.vaddio.com · Phone 800.572.2011 / +1.763.971.4400 · Fax +1.763.971.4464 · Email info@vaddio.com

Visit us at support.vaddio.com for firmware updates, specifications, drawings, manuals, technical support information, and more. Vaddio, RoboSHOT, and OneLINK are trademarks or registered trademarks of Milestone AV Technologies. HDBaseT™ and the HDBaseT Alliance logo are trademarks of the HDBaseT Alliance. Exmor® is a trademark of Sony Corporation. All other brand names or marks are used for identification purposes and are trademarks of their respective owners. In British Columbia, Milestone AV Technologies ULC carries on business as MAVT Milestone AV Technologies ULC.

©2018 Milestone AV Technologies

The logo for Vaddio, featuring the word "vaddio" in a bold, blue, lowercase sans-serif font. The final letter "o" is stylized as a circle with a smaller solid circle inside it, resembling an eye or a camera lens. A registered trademark symbol (®) is located at the top right of the "o".

vaddio®